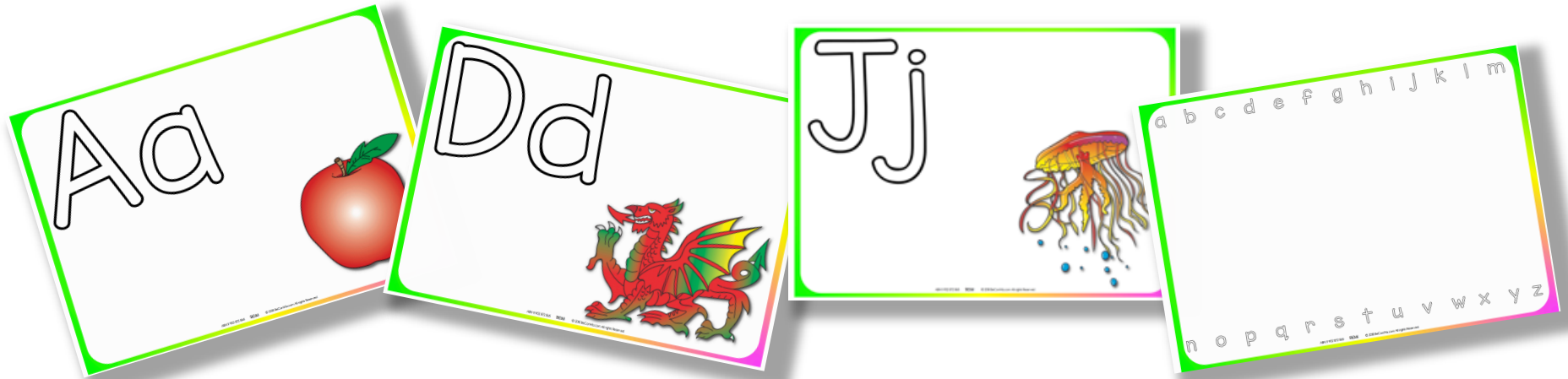




Exploring the alphabet: Guided inquiry

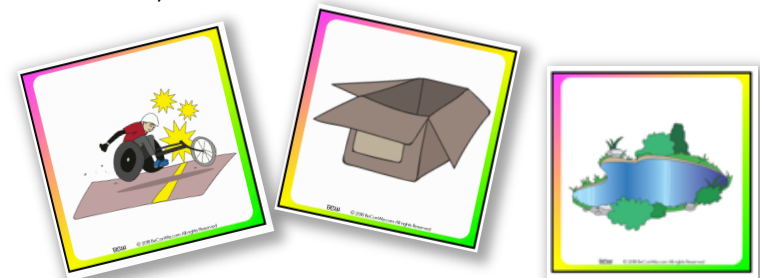


Included in the resource:

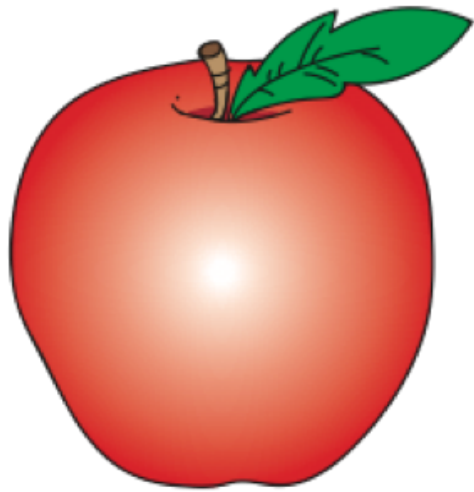
- Two mats with complete alphabet on them (One lower case letters, one upper case letters)
- Ninety picture cards
- Six blank picture cards

Not included in the resource:

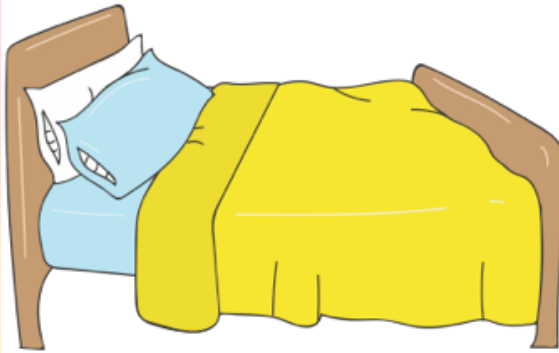
- Objects or images for sorting or grouping by sound
- Playdough
- Pens



Teaching resources that move [Beyond Conventional Wisdom](#). Our resources are designed to support student choice, voice and agency. The resources are ideal for all teaching styles, but particularly suited to inquiry (constructivist) teaching. Our aim is to move beyond conventional teaching tools, consultancy and training by creating tailored resources, strategies and training opportunities that enable teachers to implement supportive, differentiated, challenging and innovative learning experiences.



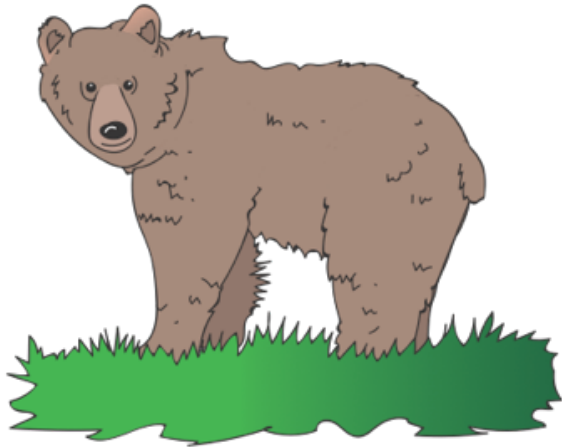
BCW © 2018 BeConWiz.com All rights Reserved



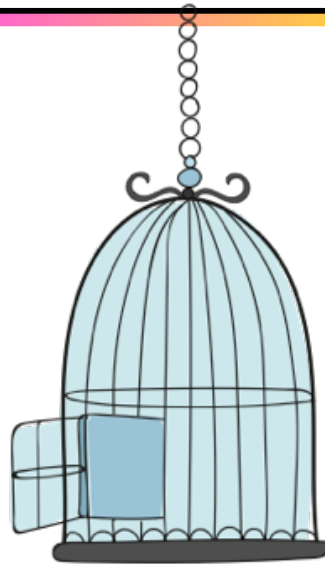
BCW © 2018 BeConWiz.com All rights Reserved



BCW © 2018 BeConWiz.com All rights Reserved



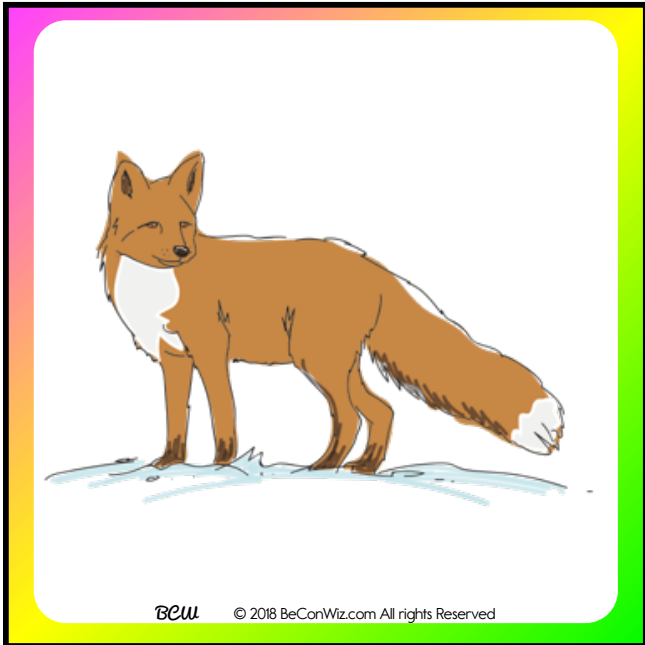
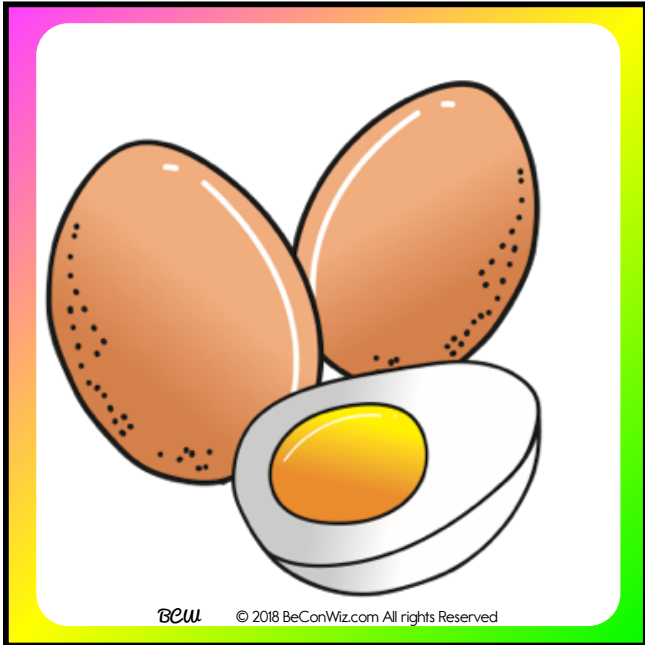
BCW © 2018 BeConWiz.com All rights Reserved

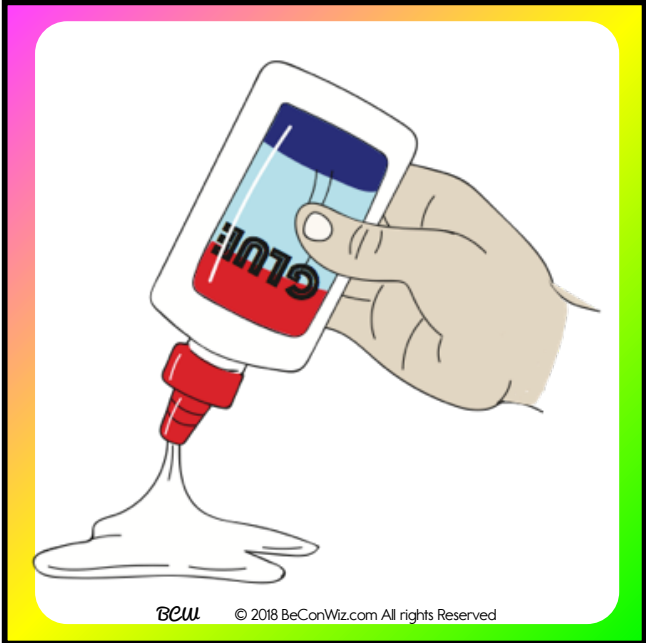


BCW © 2018 BeConWiz.com All rights Reserved

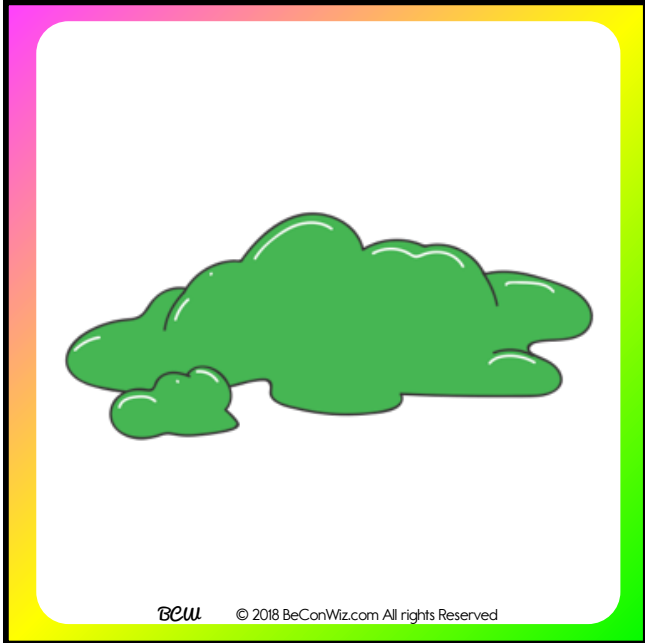


BCW © 2018 BeConWiz.com All rights Reserved

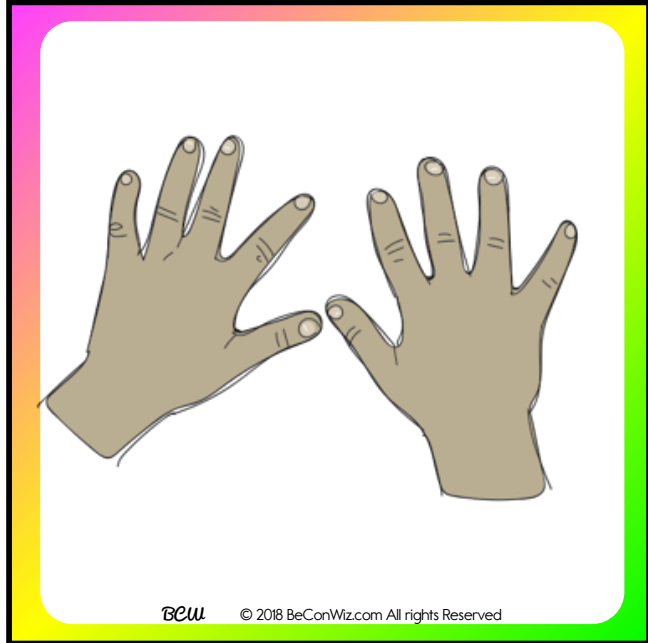




BCW © 2018 BeConWiz.com All rights Reserved



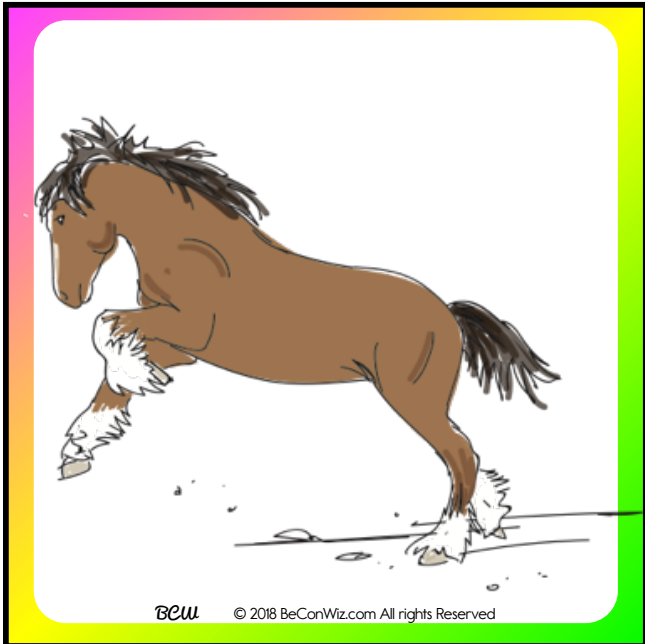
BCW © 2018 BeConWiz.com All rights Reserved



BCW © 2018 BeConWiz.com All rights Reserved



BCW © 2018 BeConWiz.com All rights Reserved



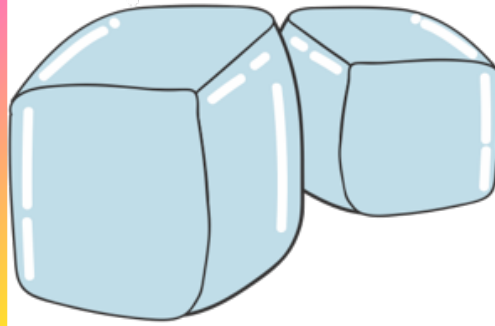
BCW © 2018 BeConWiz.com All rights Reserved



BCW © 2018 BeConWiz.com All rights Reserved



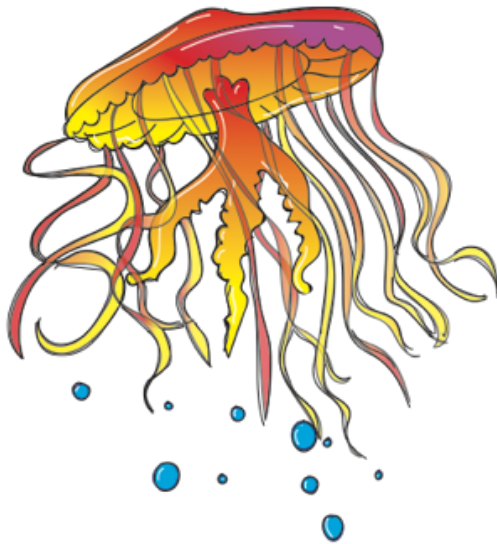
BCW © 2018 BeConWiz.com All rights Reserved



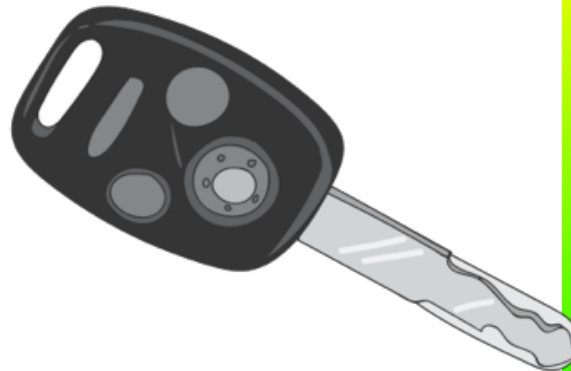
BCW © 2018 BeConWiz.com All rights Reserved



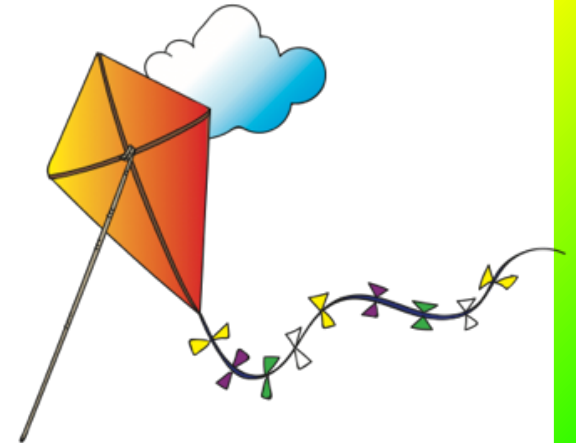
BCW © 2018 BeConWiz.com All rights Reserved



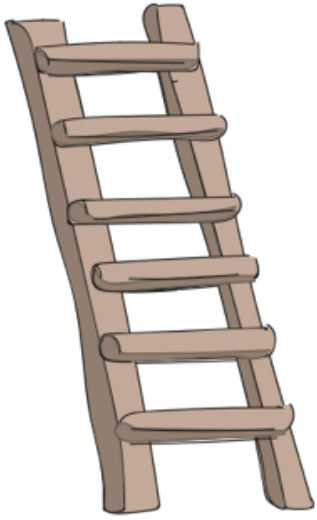
BCW © 2018 BeConWiz.com All rights Reserved



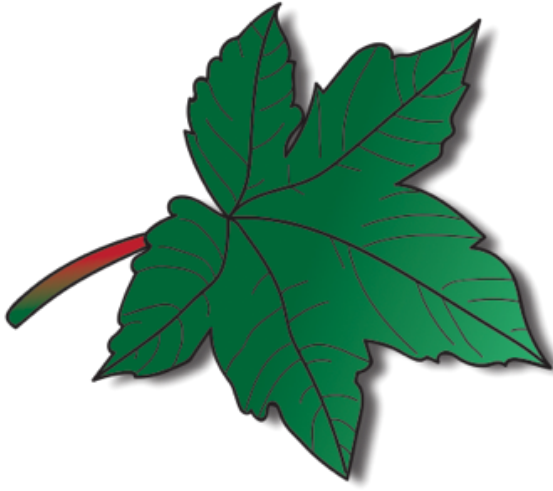
BCW © 2018 BeConWiz.com All rights Reserved



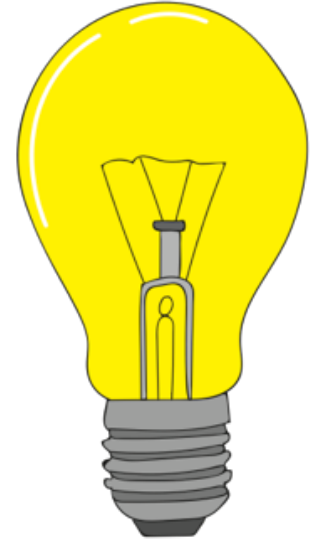
BCW © 2018 BeConWiz.com All rights Reserved



BCW © 2018 BeConWiz.com All rights Reserved



BCW © 2018 BeConWiz.com All rights Reserved



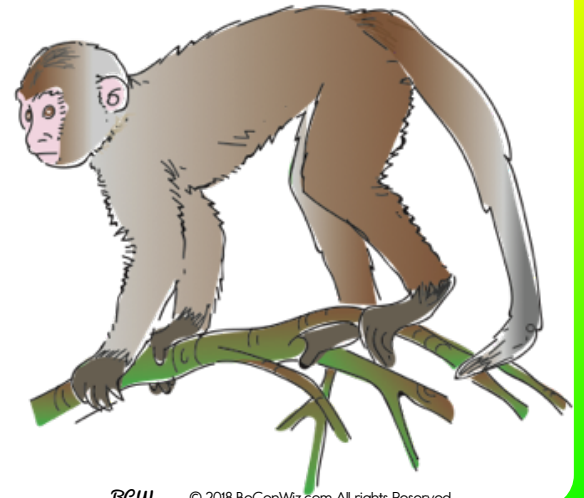
BCW © 2018 BeConWiz.com All rights Reserved



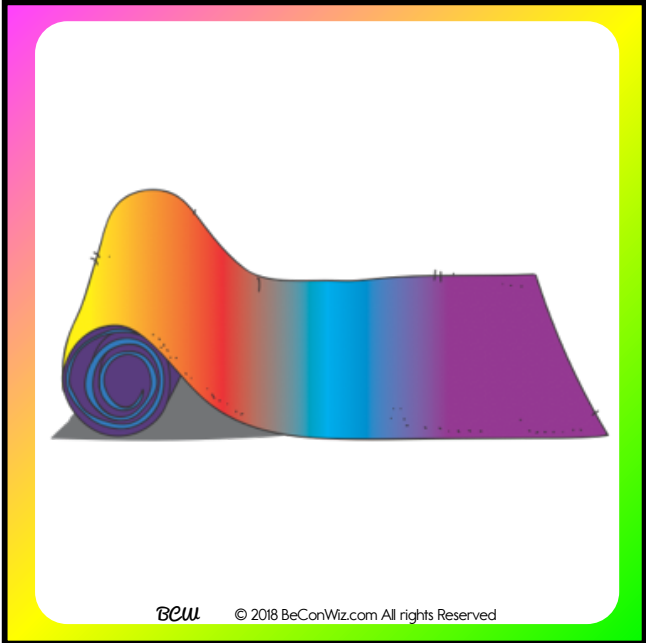
BCW © 2018 BeConWiz.com All rights Reserved



BCW © 2018 BeConWiz.com All rights Reserved



BCW © 2018 BeConWiz.com All rights Reserved



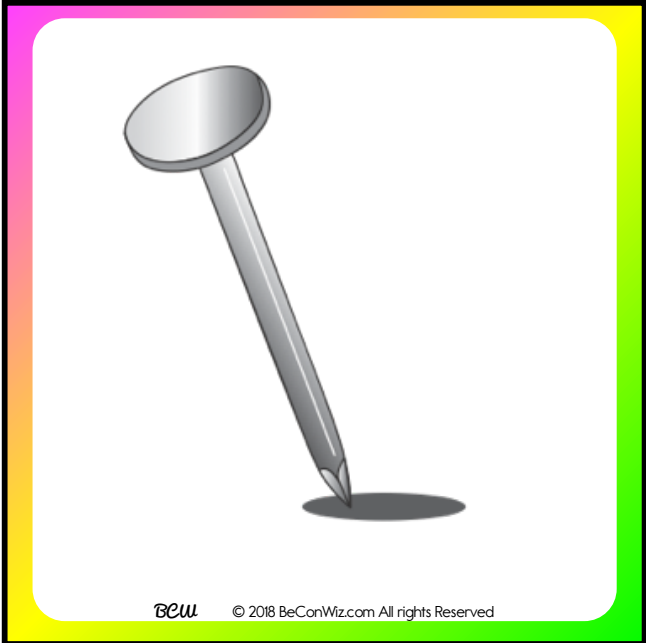
BCW © 2018 BeConWiz.com All rights Reserved



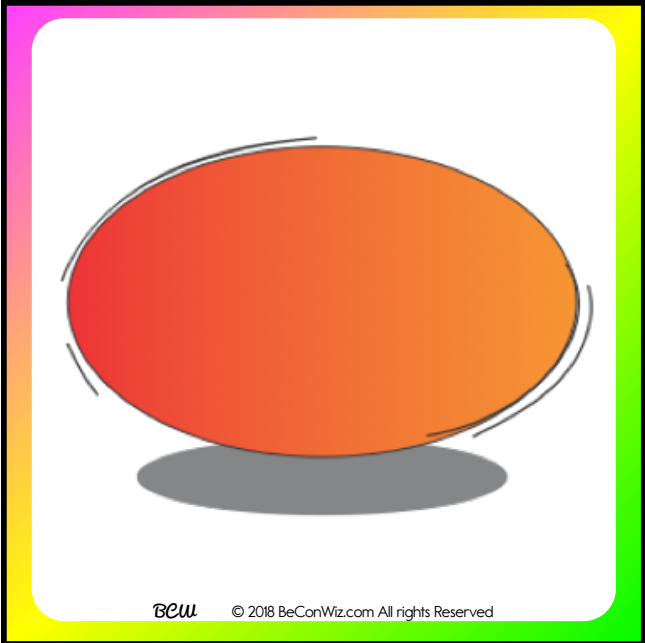
BCW © 2018 BeConWiz.com All rights Reserved



BCW © 2018 BeConWiz.com All rights Reserved



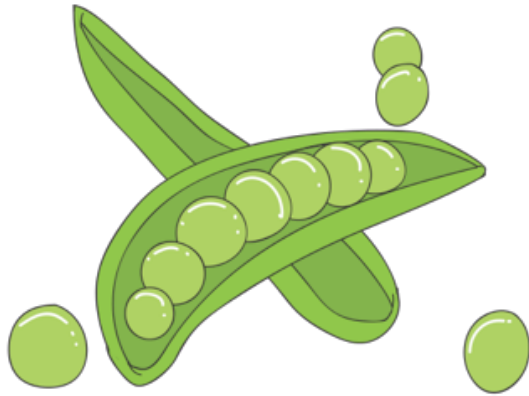
BCW © 2018 BeConWiz.com All rights Reserved



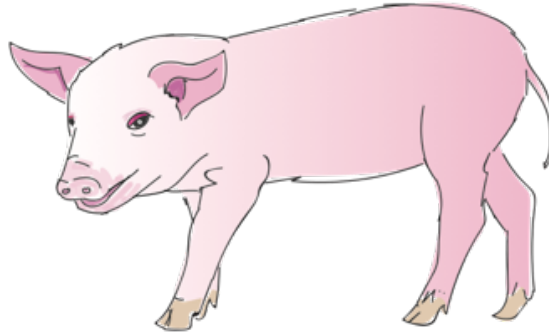
BCW © 2018 BeConWiz.com All rights Reserved



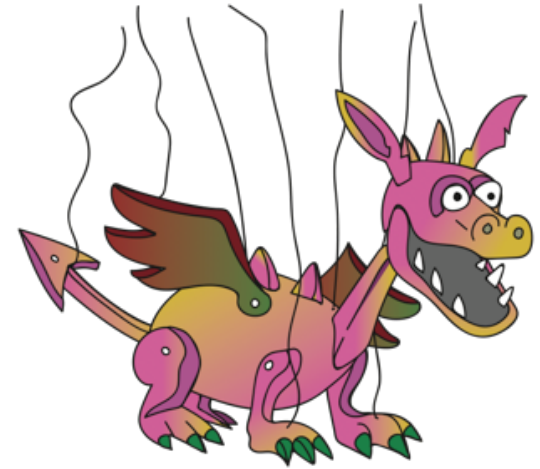
BCW © 2018 BeConWiz.com All rights Reserved



BCW © 2018 BeConWiz.com All rights Reserved



BCW © 2018 BeConWiz.com All rights Reserved



BCW © 2018 BeConWiz.com All rights Reserved



SHHHHHH

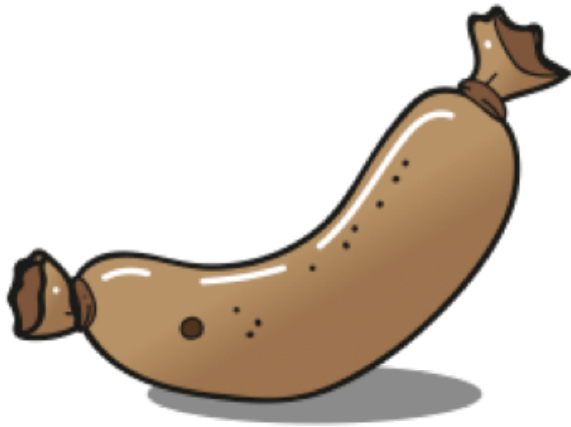
BCW © 2018 BeConWiz.com All rights Reserved



BCW © 2018 BeConWiz.com All rights Reserved



BCW © 2018 BeConWiz.com All rights Reserved



BCW © 2018 BeConWiz.com All rights Reserved



BCW © 2018 BeConWiz.com All rights Reserved



BCW © 2018 BeConWiz.com All rights Reserved



BCW © 2018 BeConWiz.com All rights Reserved



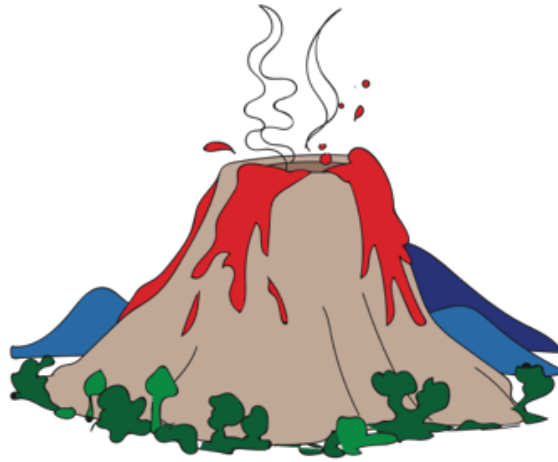
BCW © 2018 BeConWiz.com All rights Reserved



BCW © 2018 BeConWiz.com All rights Reserved



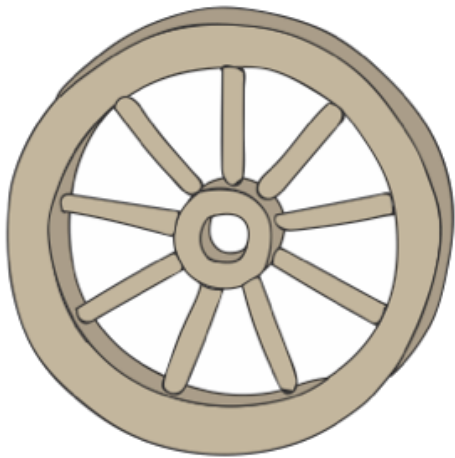
BCW © 2018 BeConWiz.com All rights Reserved



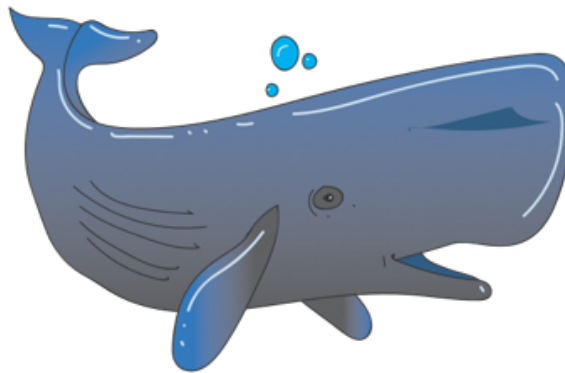
BCW © 2018 BeConWiz.com All rights Reserved



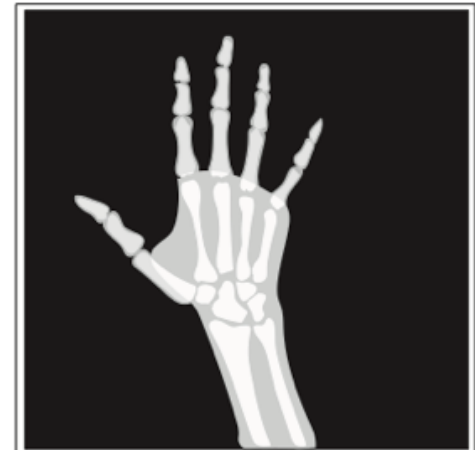
BCW © 2018 BeConWiz.com All rights Reserved



BCW © 2018 BeConWiz.com All rights Reserved

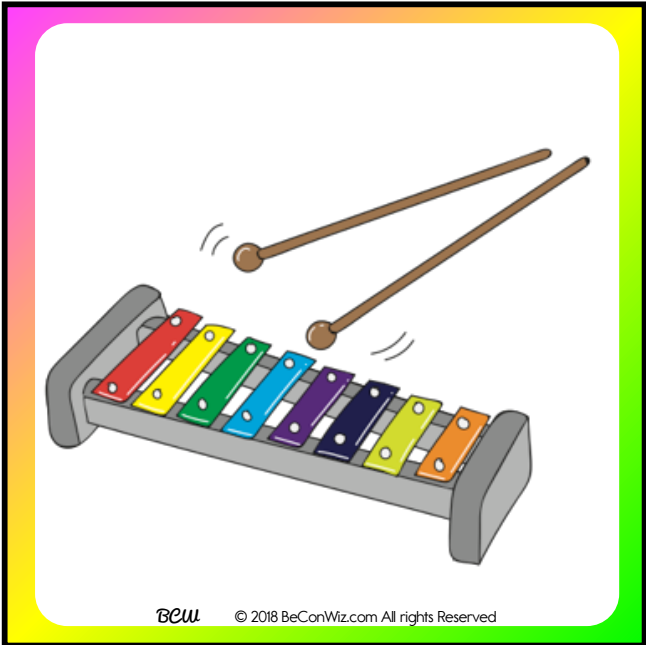


BCW © 2018 BeConWiz.com All rights Reserved



X Ray 2400Q

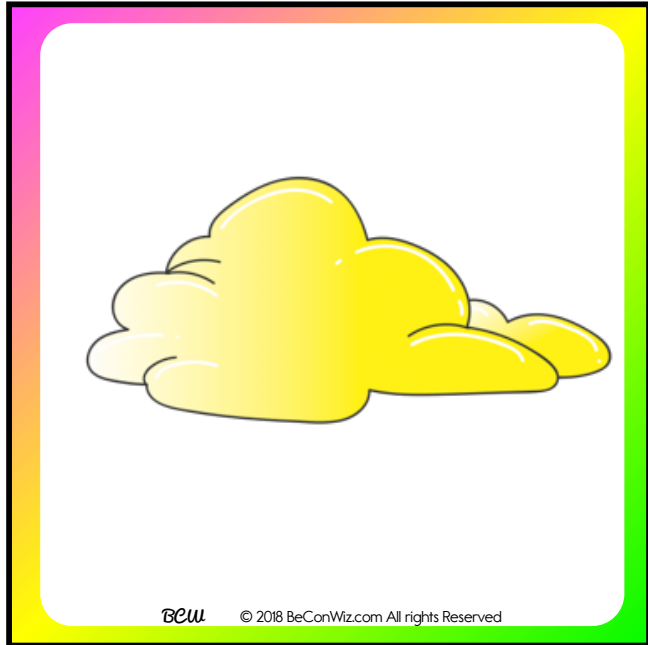
BCW © 2018 BeConWiz.com All rights Reserved



BCW © 2018 BeConWiz.com All rights Reserved



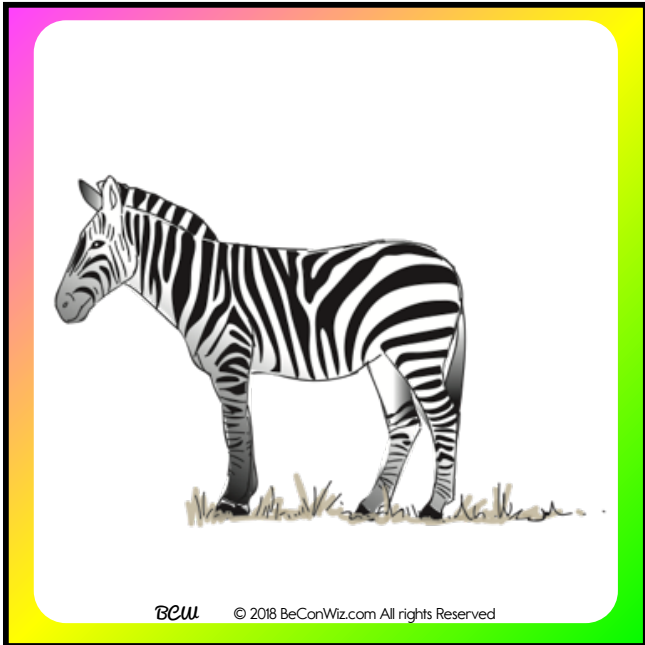
BCW © 2018 BeConWiz.com All rights Reserved



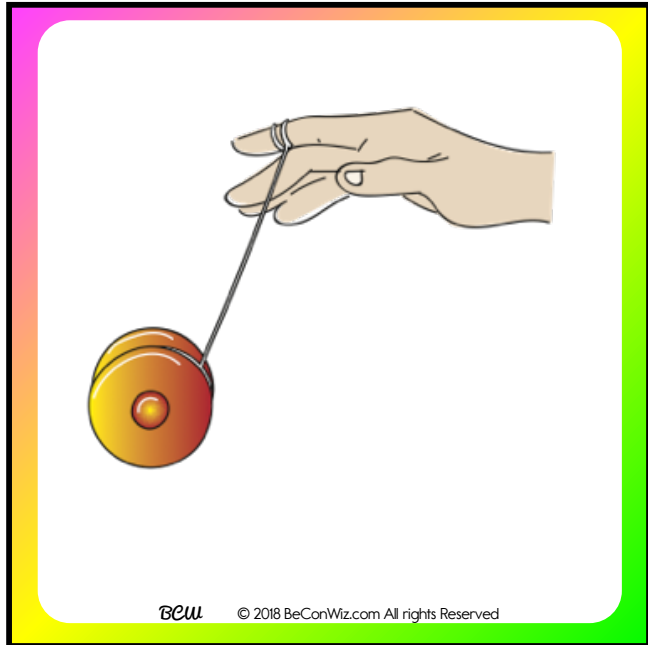
BCW © 2018 BeConWiz.com All rights Reserved



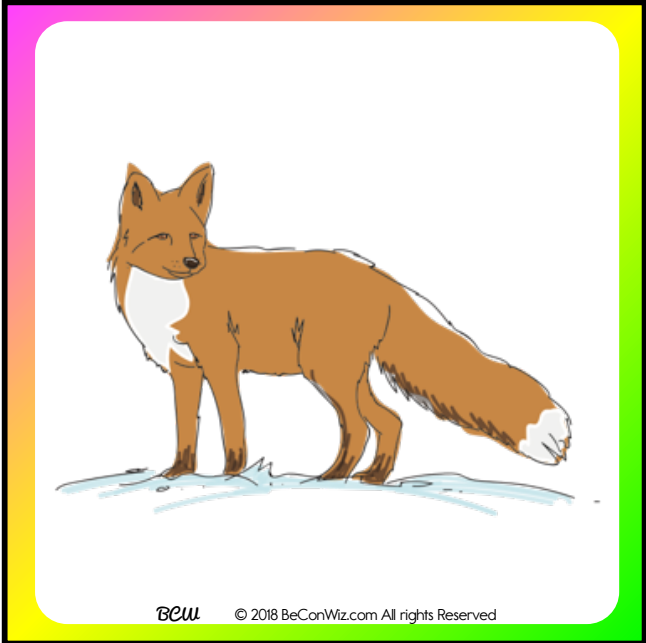
BCW © 2018 BeConWiz.com All rights Reserved



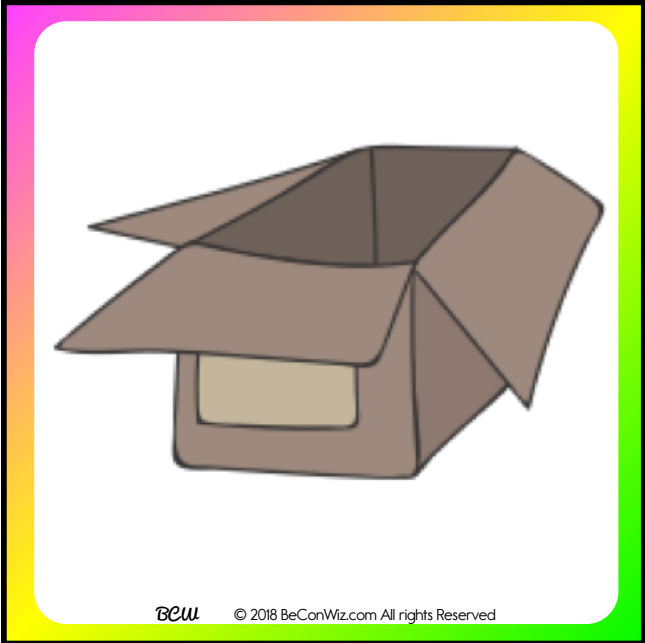
BCW © 2018 BeConWiz.com All rights Reserved



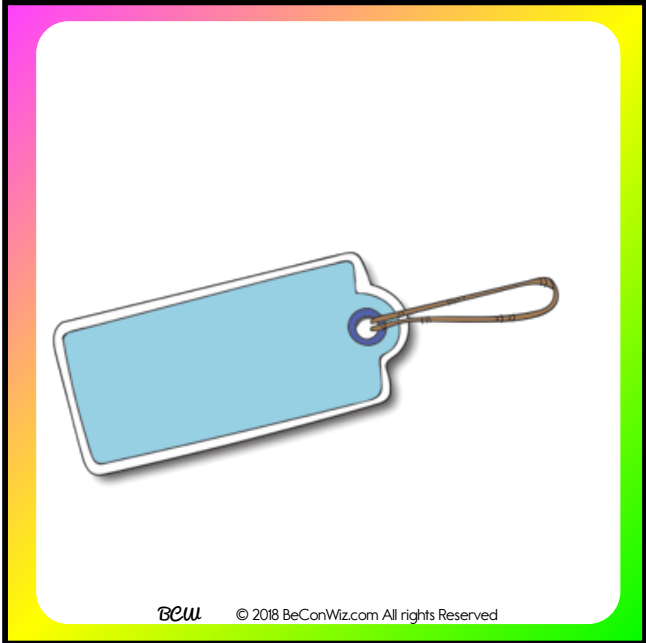
BCW © 2018 BeConWiz.com All rights Reserved



BCW © 2018 BeConWiz.com All rights Reserved



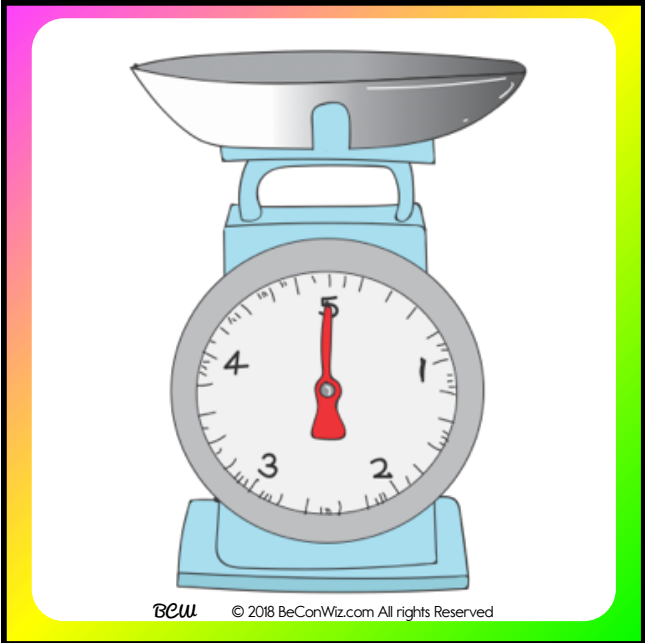
BCW © 2018 BeConWiz.com All rights Reserved



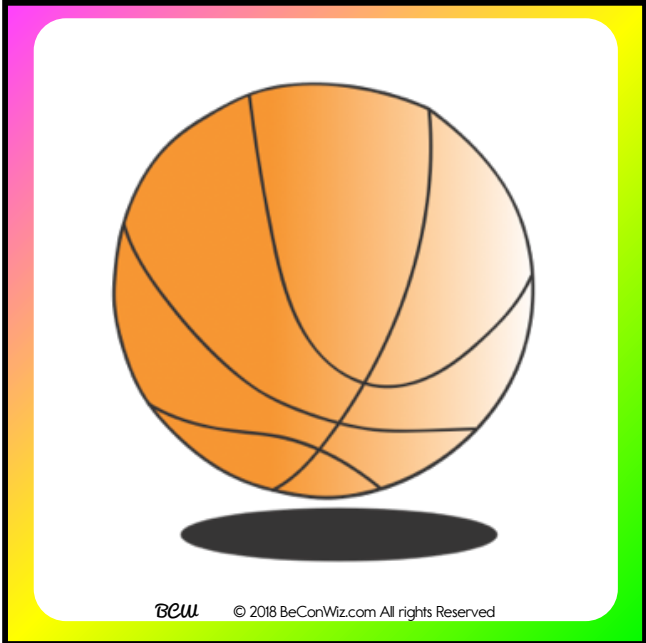
BCW © 2018 BeConWiz.com All rights Reserved



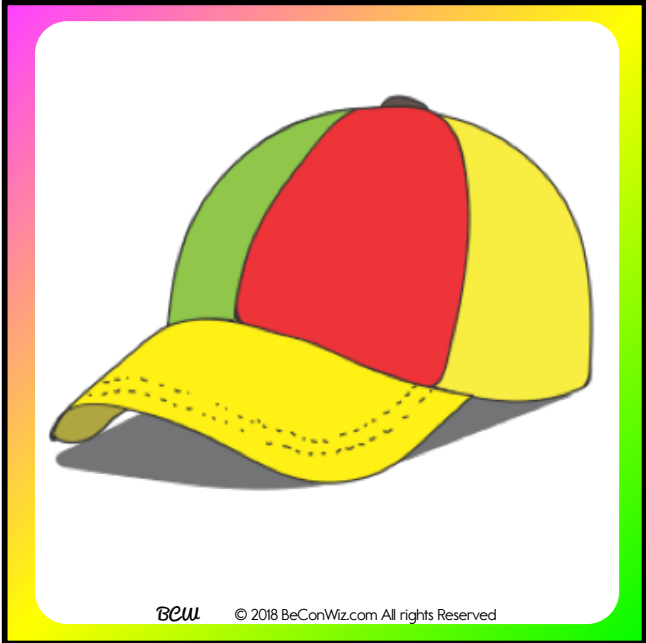
BCW © 2018 BeConWiz.com All rights Reserved



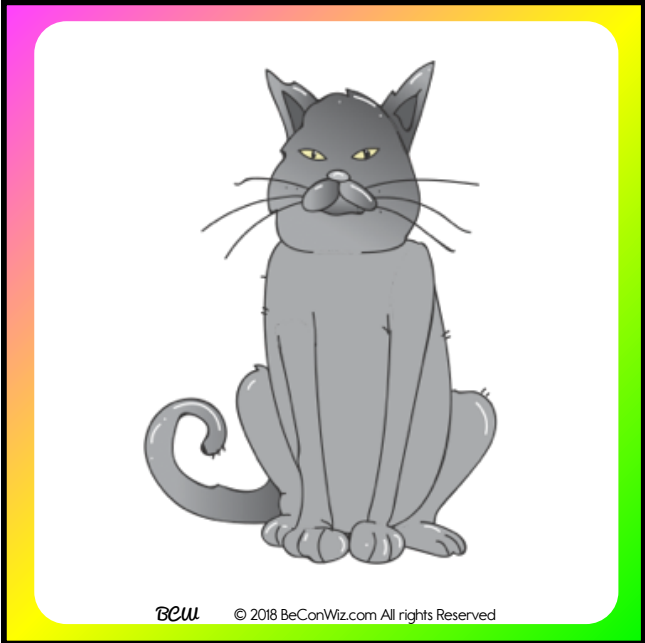
BCW © 2018 BeConWiz.com All rights Reserved



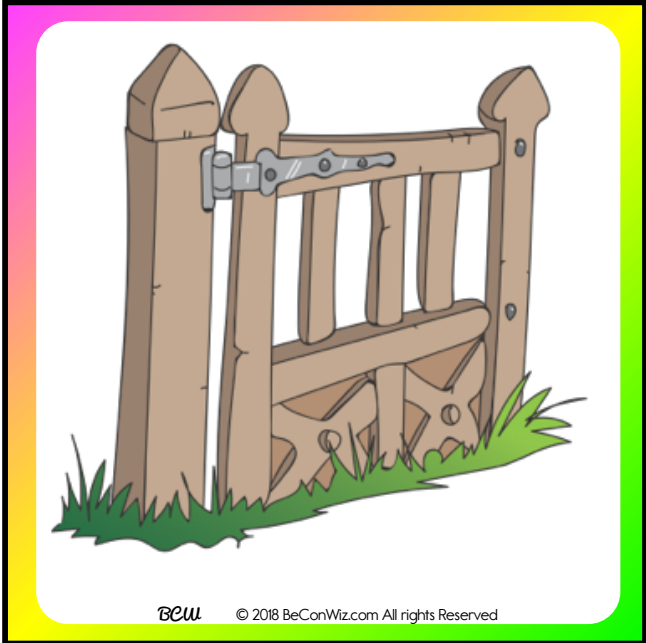
BCW © 2018 BeConWiz.com All rights Reserved



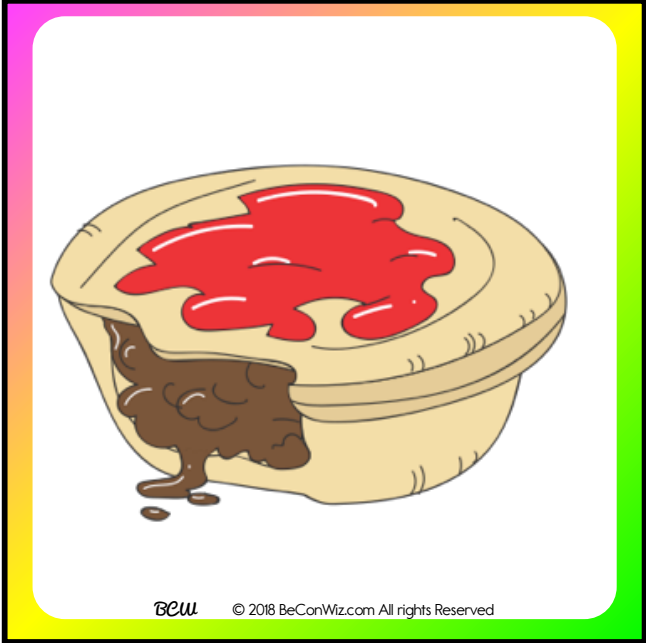
BCW © 2018 BeConWiz.com All rights Reserved



BCW © 2018 BeConWiz.com All rights Reserved



BCW © 2018 BeConWiz.com All rights Reserved



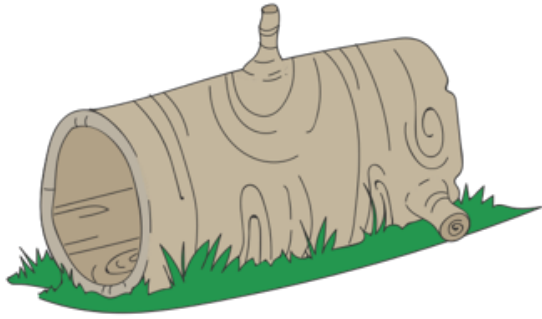
BCW © 2018 BeConWiz.com All rights Reserved



BCW © 2018 BeConWiz.com All rights Reserved



BCW © 2018 BeConWiz.com All rights Reserved



BCW © 2018 BeConWiz.com All rights Reserved



BCW © 2018 BeConWiz.com All rights Reserved



BCW © 2018 BeConWiz.com All rights Reserved



BCW © 2018 BeConWiz.com All rights Reserved



BCW © 2018 BeConWiz.com All rights Reserved



BCW © 2018 BeConWiz.com All rights Reserved



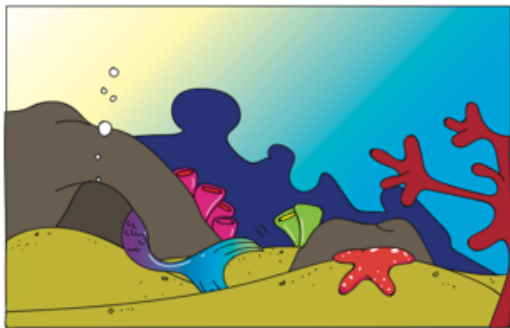
BCW © 2018 BeConWiz.com All rights Reserved



BCW © 2018 BeConWiz.com All rights Reserved



BCW © 2018 BeConWiz.com All rights Reserved



BCW © 2018 BeConWiz.com All rights Reserved



BCW © 2018 BeConWiz.com All rights Reserved



BCW © 2018 BeConWiz.com All rights Reserved

APRIL 2018

SUN	MON	TUE	WED	THU	FRI	SAT
01	02	03	04	05	06	07
08	09	10	11	12	13	14
15	16	17	18	19	20	21
22	23	24	25	26	27	28
29	30					

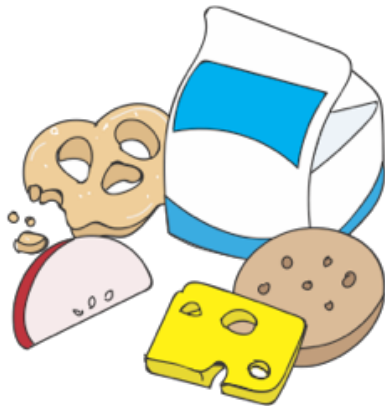
BCW © 2018 BeConWiz.com All rights Reserved



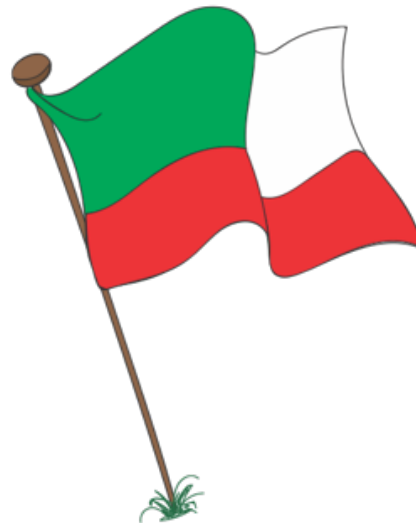
BCW © 2018 BeConWiz.com All rights Reserved



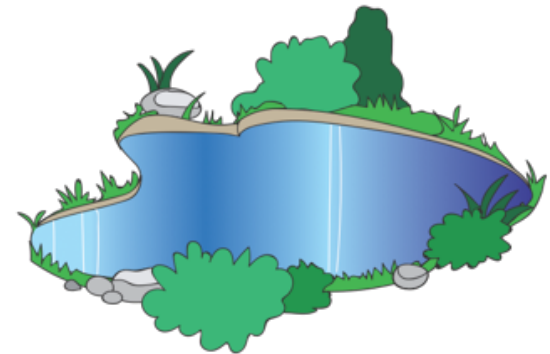
BCW © 2018 BeConWiz.com All rights Reserved



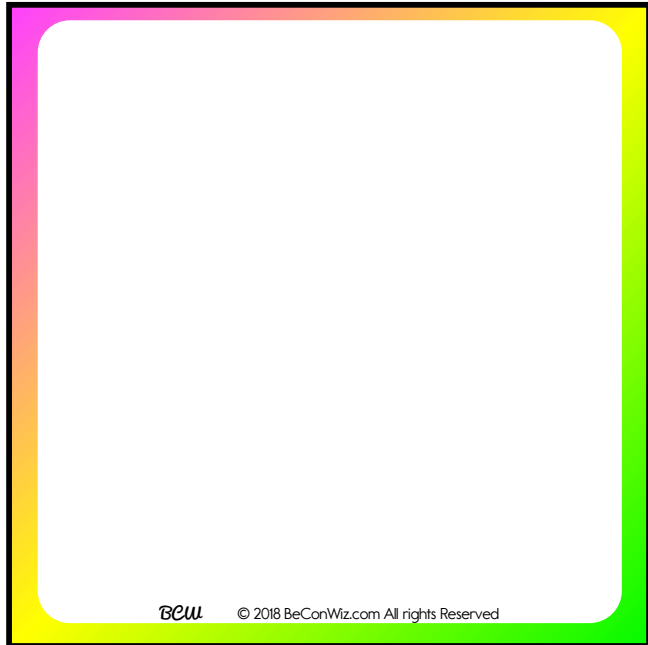
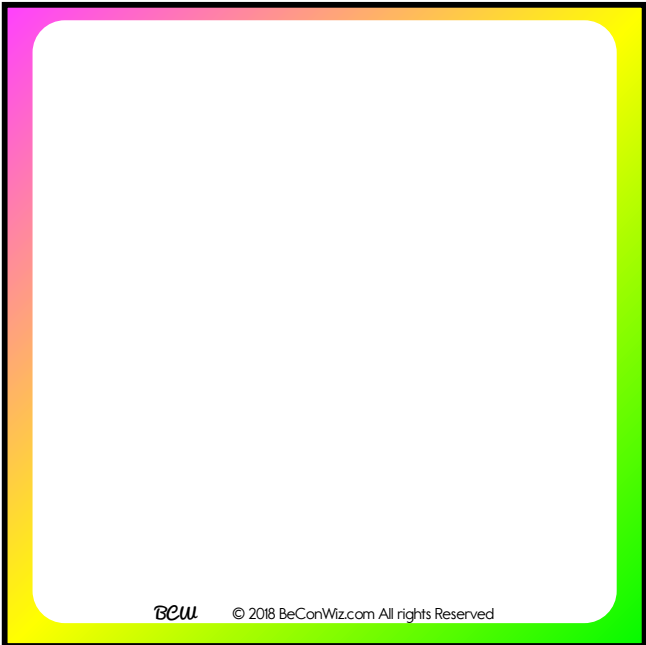
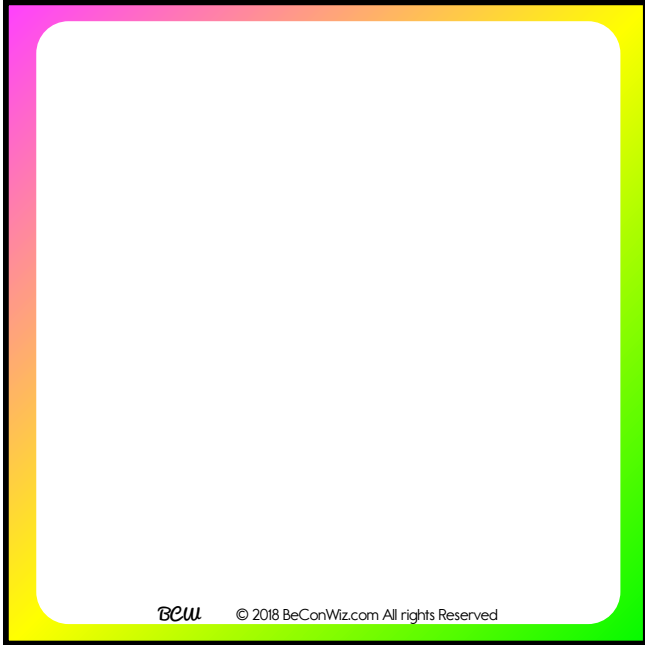
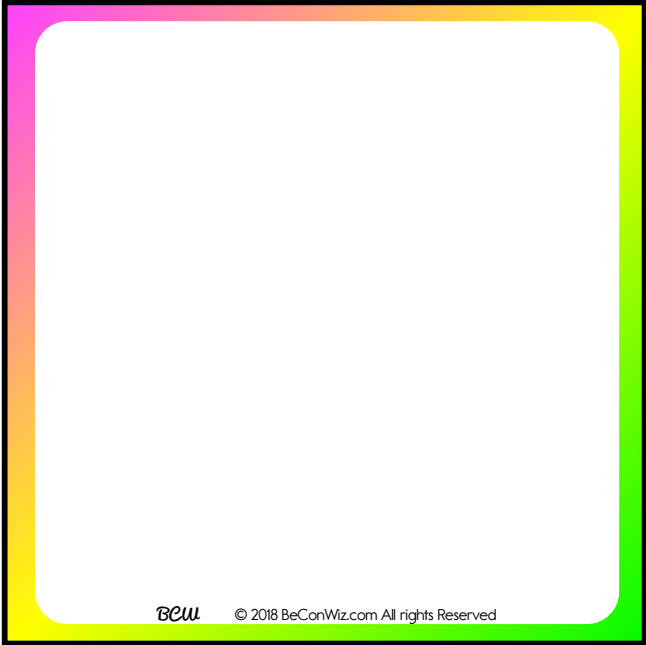
BCW © 2018 BeConWiz.com All rights Reserved



BCW © 2018 BeConWiz.com All rights Reserved



BCW © 2018 BeConWiz.com All rights Reserved



a b c d e f g h i j k l m

n o p q r s t u v w x y z

A B C D E F G H I J K L M

N O P Q R S T U V W X Y Z

I

Interest

Prior knowledge connections : *Providing frameworks for increasing student engagement through prior knowledge connections and interests.*

Learners will have an opportunity to connect to prior knowledge and current interests by



- Drawing on prior knowledge and experiences to problem solve
- Using vocabulary and language that is familiar and know to learner
- Being encouraged to experiment with possibility
- Take action with known ideas about letters, sounds and symbols

A

Agency

Voice, Choice being response-abled: *Developing scaffolds that support voice and choice in the learning process.*

Learners will be actively involved in the decision making process by...



- Being supported to take an interest in words and word creation in personally relevant and meaningful languages
- Uses mistakes as a launch pad for new learning
- Engaging in communication processes in ways that are personally relevant and meaningful
- Being encouraged and supported to engage in problem solving situations that are safe and respectful
- Having the opportunity to make choices using available resources

S

Skills

Processes and strategies: *Skills and strategies that support learners to engage in the learning process.*

Learners will know HOW to...



- Recognise and name all upper and lower case letters (graphemes) and know the most common sound that each letter represents
- Identify sounds in words they are familiar with
- Sort images or objects using words by identifying some sounds with the appropriate letters.
- How to begin locating initial, medial and ending sounds in known words

K

Knowledge

Knowledge and facts: *Details, facts and knowledge about a topic or process.*

Learners will KNOW ...



- Letter can represent sounds
- The sound –symbol relationship between letters and sounds
- Letters are symbols for sounds
- The letter names and sounds for the English alphabet
- Listening can help us connect sounds and symbols

U

Understanding

Concepts and enduring understandings:

Supporting learners' meaning making and enabling learning to become portable in problem solving situations.

Learners will be develop an UNDERSTANDING



- Symbols can be used to represent ideas
- People use different systems of communication to cater to different needs and purposes and that many people may use sign systems to communicate with others

TERMS AND CONDITIONS of using beconwiz.com products

LICENSE TO USE PURCHASED INDIVIDUAL CLIP ART

The clipart purchased on this site may only be used for personal or class use. It can not be used in the production or publication of any materials, resources or other related goods that are to be sold onto others or for commercial use. Schools wishing to buy clip art for across school use or in school publications must contact the BeConWiz team for a price for this option.

LICENSE TO USE PRODUCTS

Any products purchased from BeConWiz are purchased by you for your personal use and not for distribution or resale. BeConWiz download resources are able to be printed for personal use by the purchaser (a given single educator) only. They can be used to teach your class of students, and are intended to be used in this way. Schools wishing to use product packages or negotiate tailored deals or teaching teams must contact BeConWiz directly and negotiate separate terms and conditions. Any workshop or consultancy work will be negotiated and tailored to meet individual client needs and as such, the terms and conditions of such purchases or contracts will be issued and delivered in separate documentation.

ELECTRONIC DOWNLOAD DELIVERY

Download products are immediately available to holders of a product package of BeConWiz. If you have any problems with an immediate download, please contact us at beconwiz@beconwiz.com

DOWNLOAD PRODUCTS AND MATERIALS

We provide no guarantee that you will be able to use school computers to download BeConWiz materials. We will endeavor to do our best to ensure downloadable material is accessible on a variety of computers, tablets or devices. If you are experiencing issues with download or printing of materials please contact us, so we can improve our service to you.



"BCW will now use 'they - themselves' as a singular, gender-neutral pronoun in all material and resources generated. Just as the use of 'he - man' disappeared women's voice and identity, use of the binary 'she - he' and related pronouns has disappeared and rendered voiceless marginalised groups that do not identify with the 'he -she' pronouns. Until some wider grammatical agreement has been reached about what pronouns will be used to embrace the diversity of gender experience, in text we will use 'they - themselves' in our materials. Given that words/language create reality, using language that is acknowledging and inclusive of all people who identify across a wide gender spectrum is an issue of power, politics, respect and visibility. "