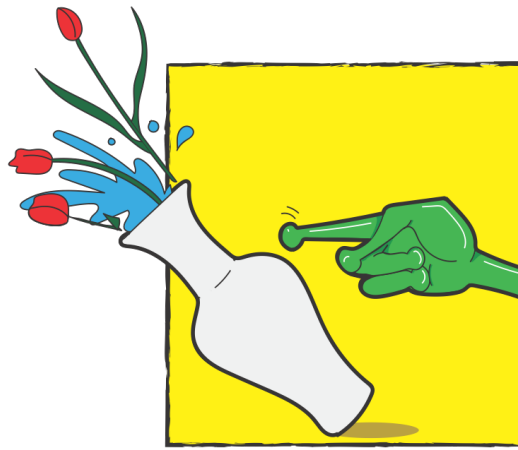
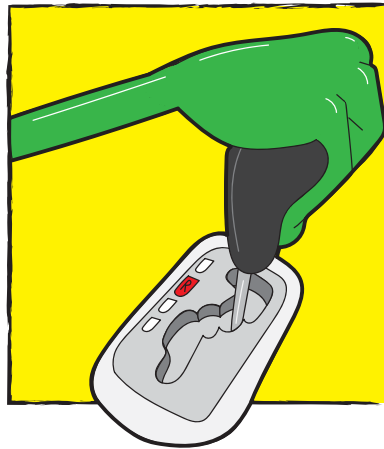




REFLECT, REVERSE, TIP, CREATE



This thinking routine has been developed to open thinking. It encourages adaption and resilience thinking, asking the thinker to step into new or unusual positions while staying connected to important values.

REFLECT

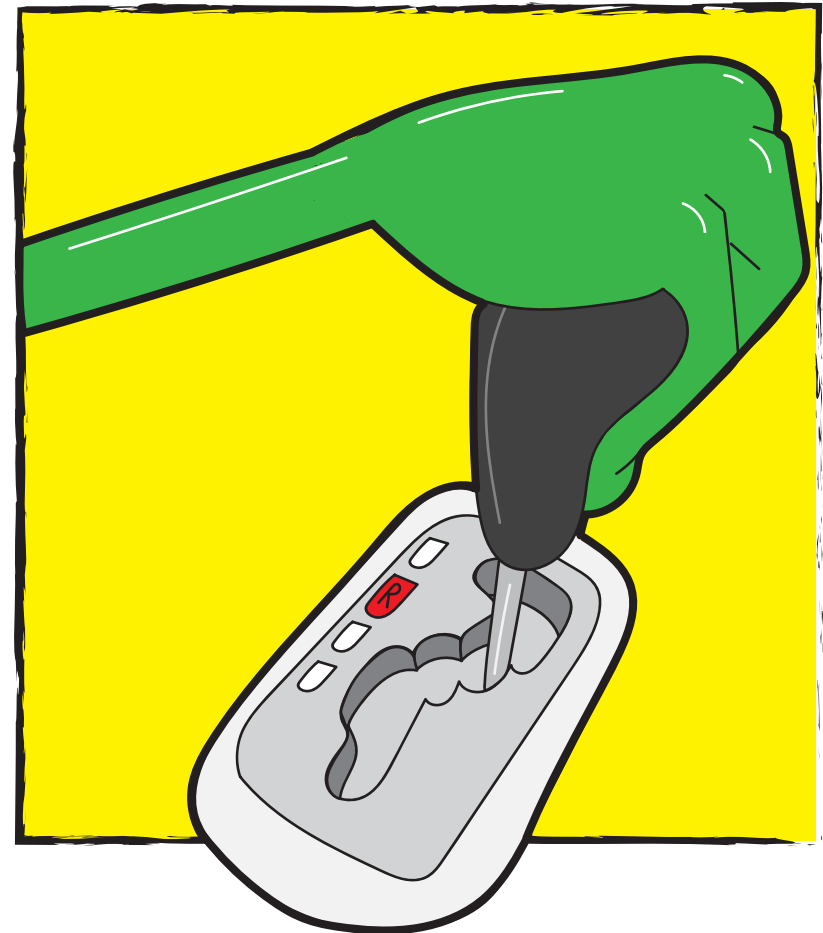
Reflect on...

- Connections
- Hidden ideas
- Obvious ideas
- How "it" is already used
- The connected problems/possibilities



REVERSE

- Is this the only way to think about it? What problems occur if this idea or object is only thought about in one way?
- If you reversed the way you think about this idea or the way the object worked, what does this make possible?



TIP

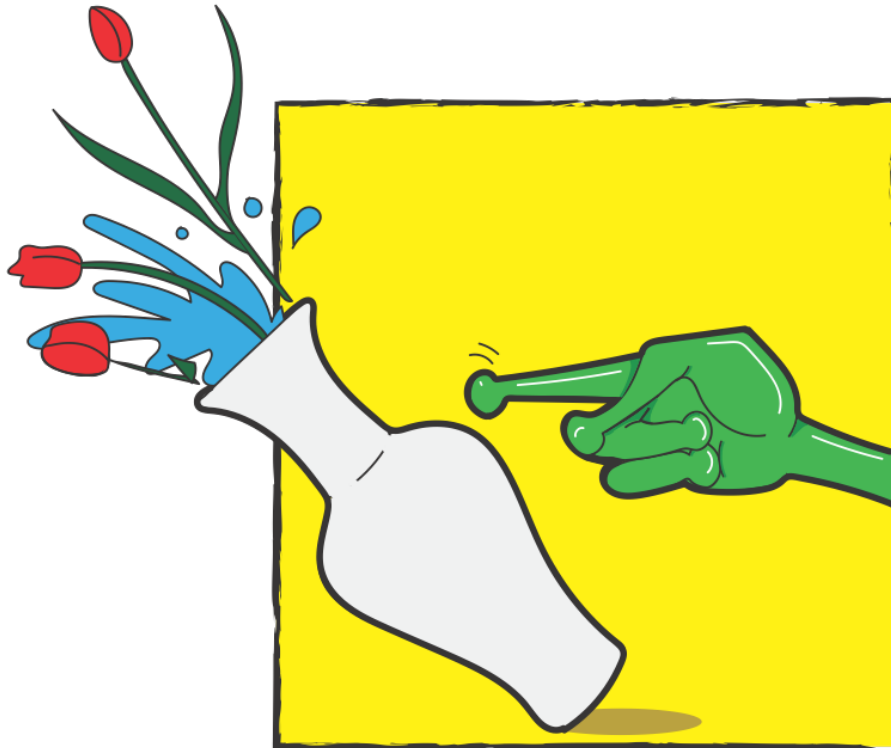
Tip the ideas you have on their heads. Take a creative 'leap'. Use your previous ideas and shift your 'frame of reference'.

What if looked at this ideas from a completely new way?

Using a different set of values?

In the context of another discipline?

How might this idea be viewed from other cultural positions or belief structures?



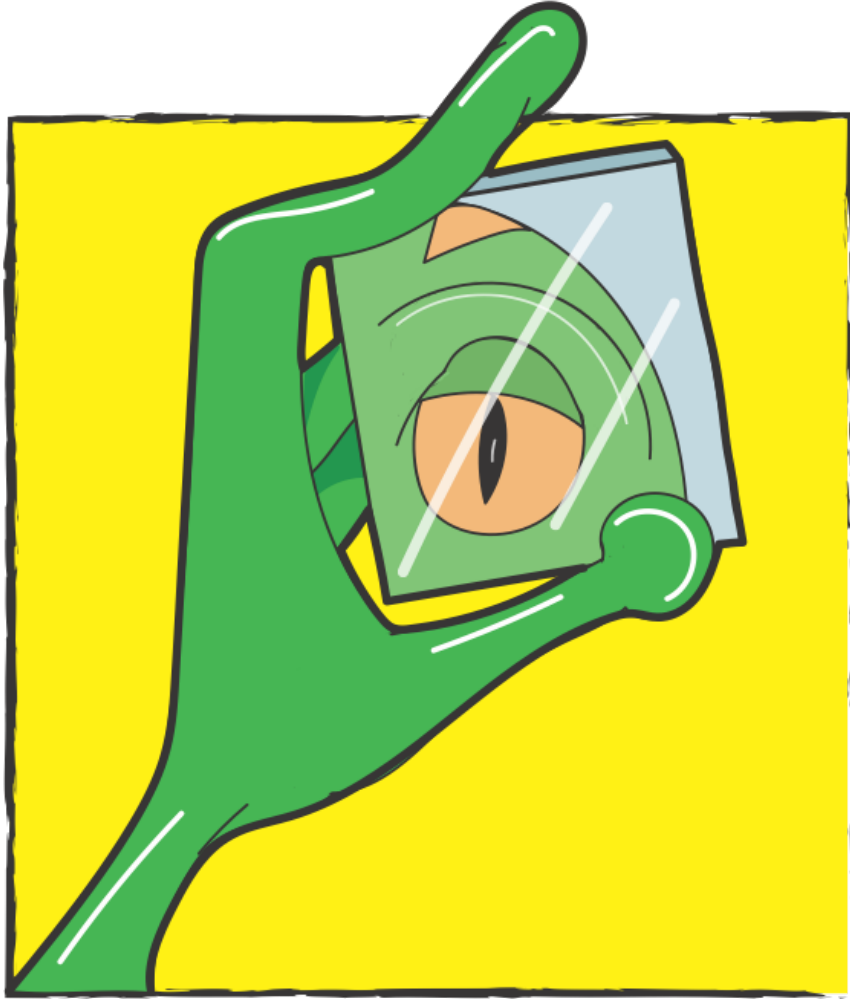
CREATE

Using these new 'tipped' up ideas, think about what this now possible? What ideas for action does it bring forward? What ideas or items are now available to built or developed?



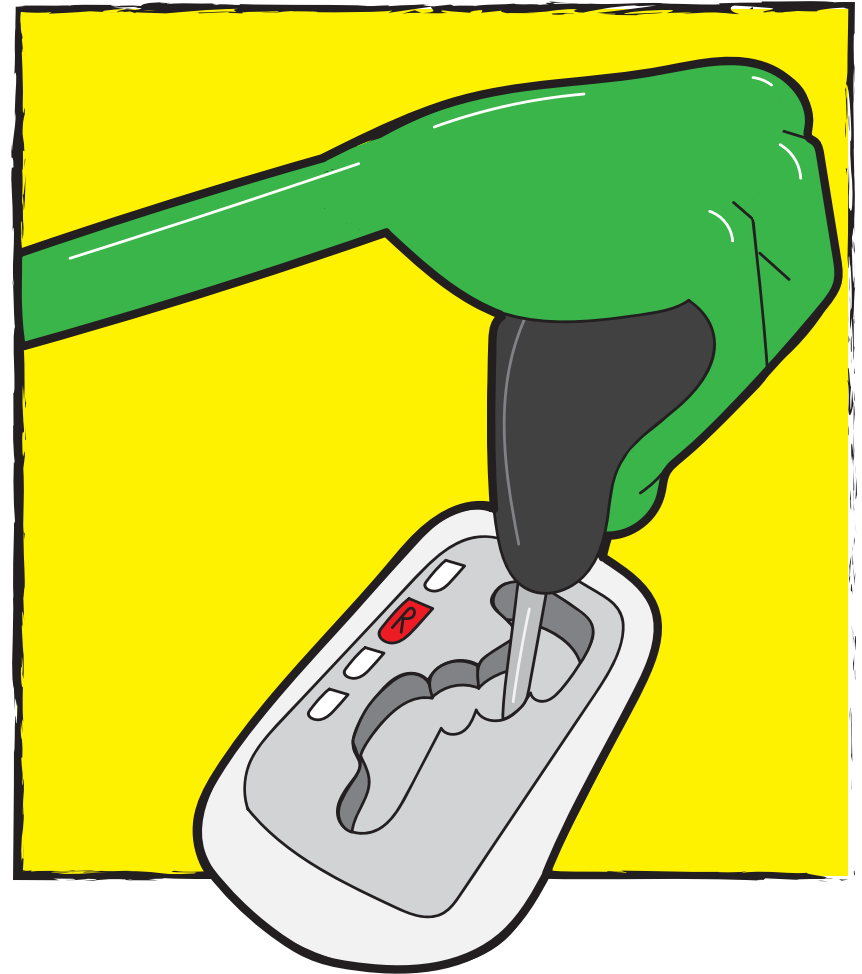
REFLECT

Reflect on a topic and identify the main point, theme or purpose of your inquiry OR develop a guiding question.



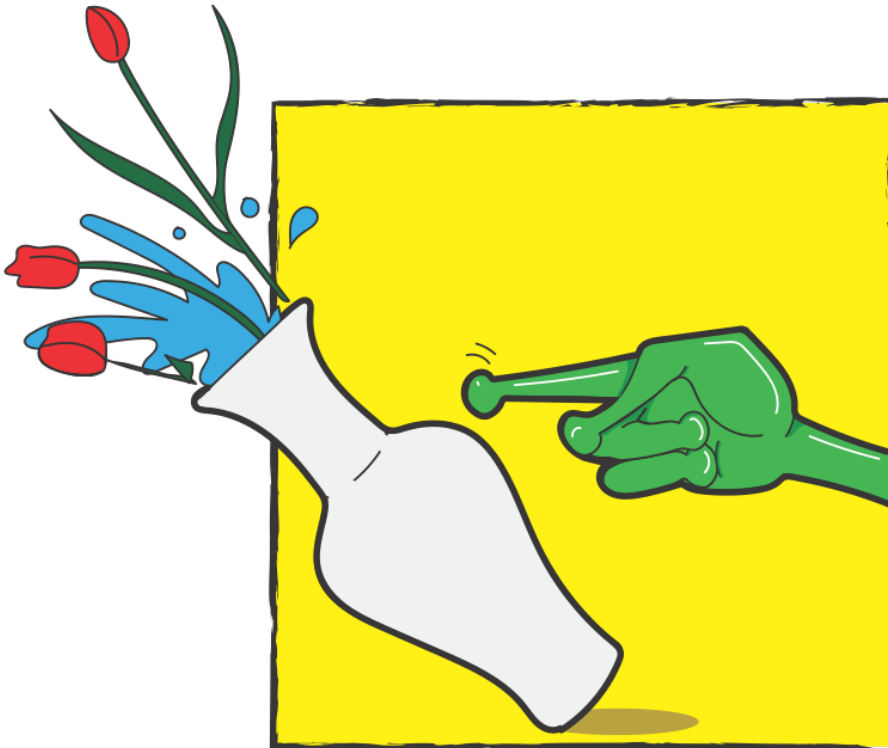
REVERSE

Choose one or two of your reflection points to challenge or think about in reverse.



TIP

Tip the ideas you have on their heads. Take a creative 'leap'. What if looked at this ideas from a completely new way? Or through a completely new lens?

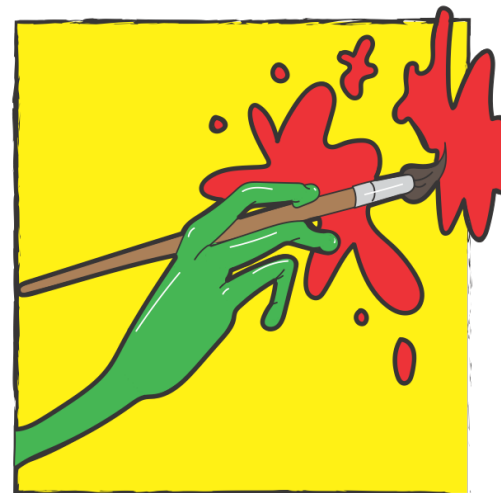
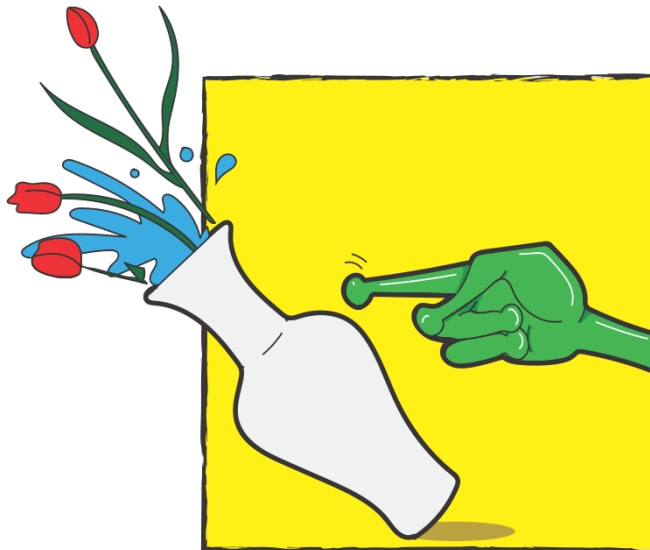
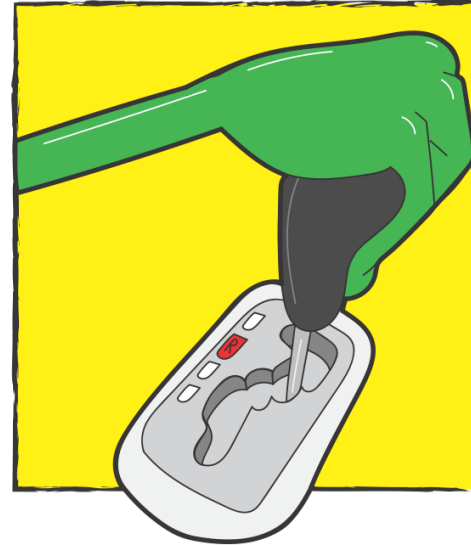
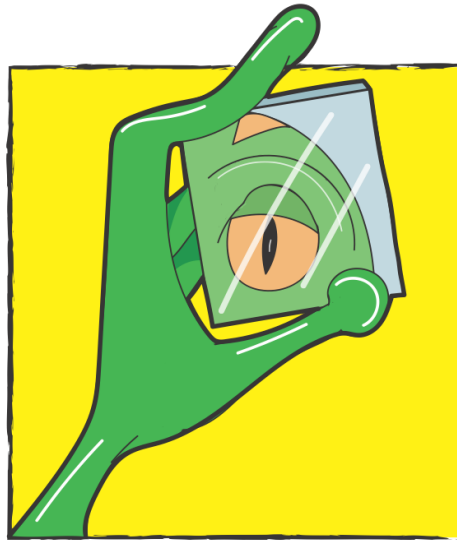


CREATE

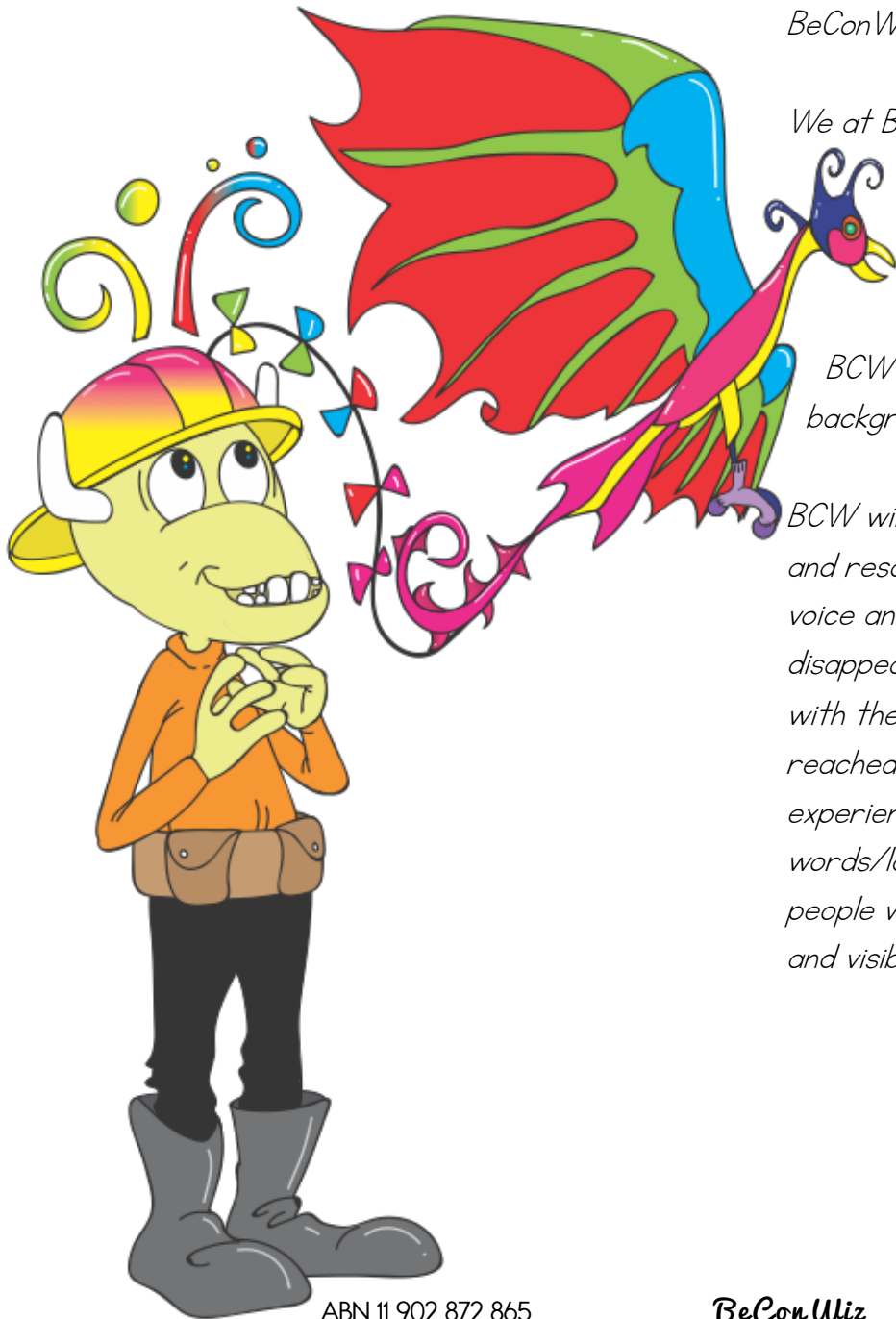
Using these new 'tipped' up ideas, think about what this now possible? What ideas or items are now available to built or developed?



Reflect Reverse Tip Create



BeConWiz's commitment to equitable and ethical practices



BeConWiz, will be referred to as BCW in this document.

We at BeConWiz, acknowledge the Traditional Custodians of the lands on which we work and live throughout Australia and recognise their continuing connection to land, waters and culture. We pay our respects to their Elders past, present and emerging.

BCW is committed to creating a safe and welcoming environment that embraces all backgrounds, cultures, sexualities, genders and abilities.'

BCW will now use 'they - themselves' as a singular, gender-neutral pronoun in all material and resources generated. Just as the use of 'he - man' disappeared women's voice and identity, use of the binary 'she - he' and related pronouns has disappeared and rendered voiceless marginalised groups that do not identify with the 'he -she' pronouns. Until some wider grammatical agreement has been reached about what pronouns will be used to embrace the diversity of gender experience, in text we will use 'they - themselves' in our materials. Given that words/language create reality, using language that is acknowledging and inclusive of all people who identify across a wide gender spectrum is an issue of power, politics, respect and visibility. "



TERMS AND CONDITIONS

LICENSE TO USE PURCHASED INDIVIDUAL CLIP ART

The clipart purchased on this site may only be used for personal or class use. It can not be used in the production or publication of any materials, resources or other related goods that are to be sold onto others or for commercial use. Schools wishing to buy clip art for across school use or in school publications must contact the BeConWiz team for a price for this option.

LICENSE TO USE PRODUCTS

Any products purchased from BeConWiz are purchased by you for your personal use and not for distribution or resale. BeConWiz download resources are able to be printed for personal use by the purchaser (a given single educator) only. They can be used to teach your class of students and are intended to be used in this way. *Schools wishing to use product packages or negotiate tailored deals or teaching teams must contact BeConWiz directly and negotiate separate terms and conditions.*

Any workshop or consultancy work will be negotiated and tailored to meet individual client needs and as such, the terms and conditions of such purchases or contracts will be issued and delivered in separate documentation.

ELECTRONIC DOWNLOAD DELIVERY

Download products are immediately available to holders of a product package of BeConWiz. If you have any problems with an immediate download, please contact us at beconwiz@beconwiz.com

DOWNLOAD PRODUCTS AND MATERIALS

We provide no guarantee that you will be able to use school computers to download BeConWiz materials. We will endeavor to do our best to ensure downloadable material is accessible on a variety of computers, tablets or devices. If you are experiencing issues with download or printing of materials please contact us, so we can improve our service to you.

