



See

Say

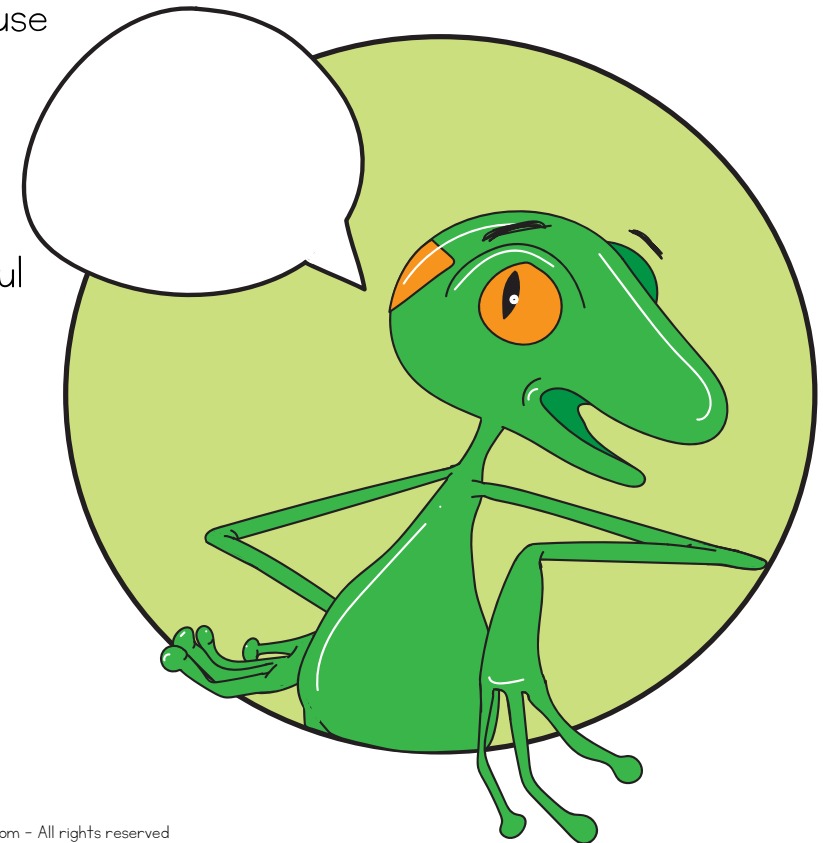
Support

Seek

The '*See Say Support Seek*' thinking routine has been developed to help thinkers notice ideas, focus and examine details and find a way to justify or support the position they have decided to take. Learners may want to try mixing up the order of the routine in order to see how this can impact thinking.

This thinking routine

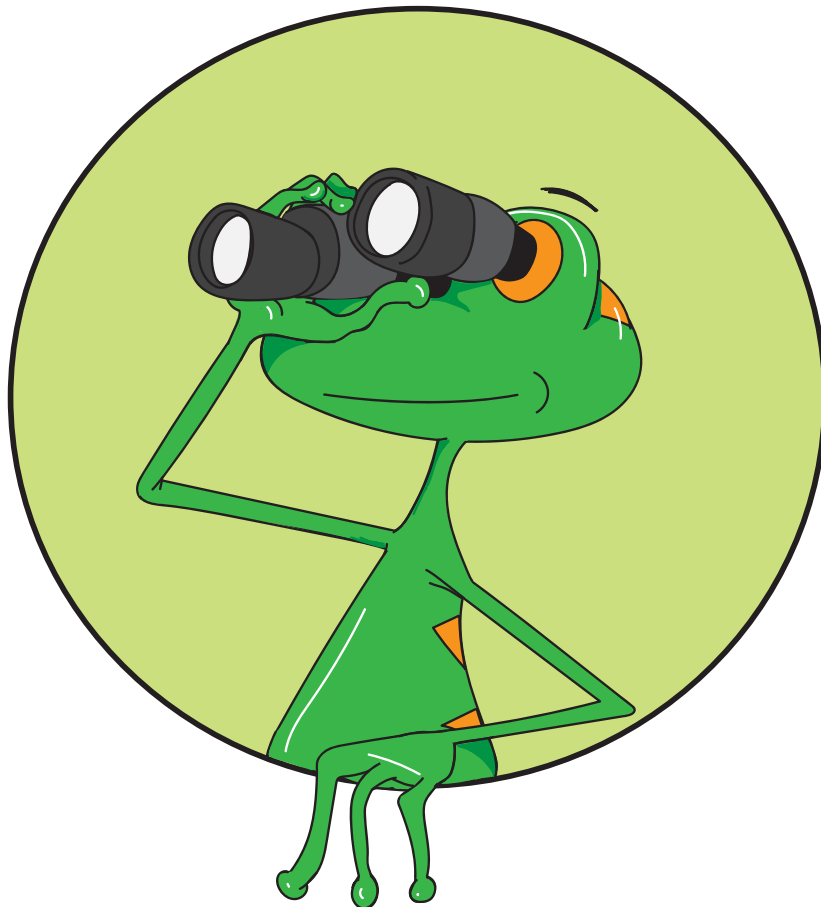
- Can be used to develop research and justification skills and understandings
- Encourages thinkers to think critically or laterally about ideas and use this information to provide supporting evidence of why a given position is being taken.
- Provides room and space for people to understand and be respectful of differences in opinion without feeling at risk or that their own ideas are 'less than' or 'more than those held by others.
- Develops skills in questioning sources and provides a platform for inquiring into or questioning 'evidence' being given



SEE IT

Take time to notice

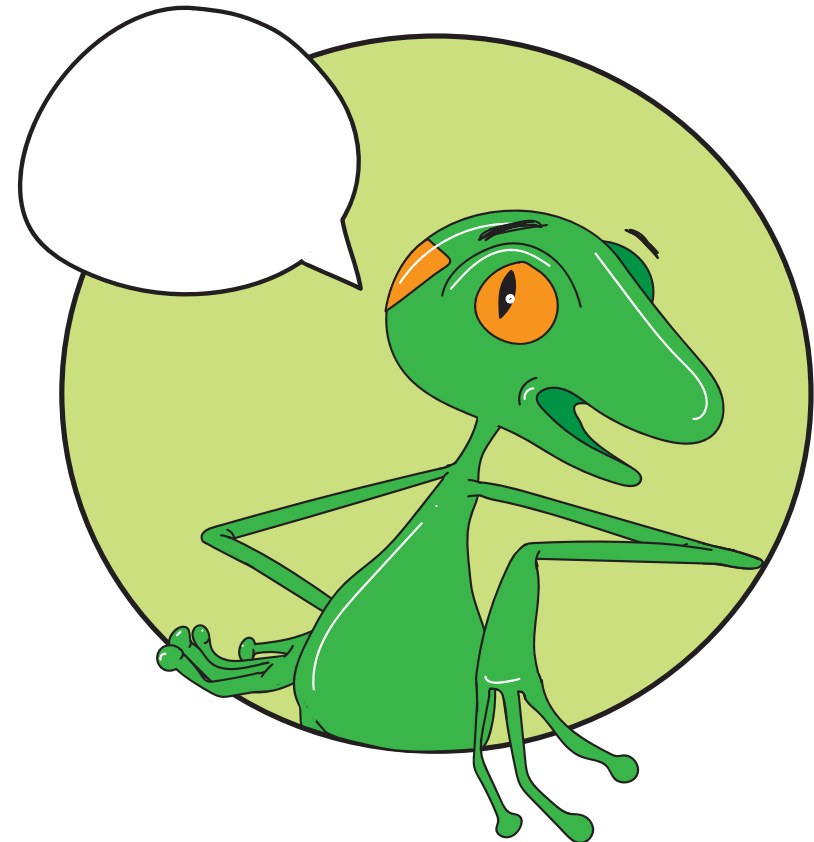
- An idea
- A perspective
- Details or information



SAY IT

Find out more about what you noticed.

Reflect on what you noticed.



What parts do you agree with or disagree with?

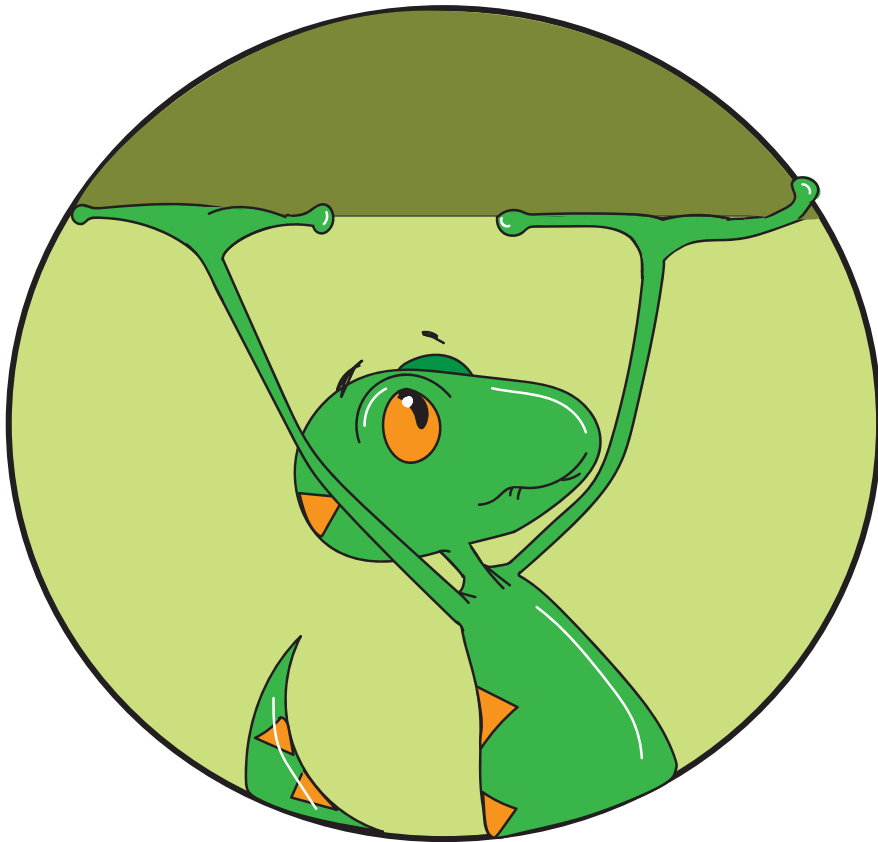
What ideas do you feel connected to?

SUPPORT IT

How can you support the ideas you are sharing?

What evidence do you have to support what you are saying or sharing?

What can you use to justify the position you are taking?



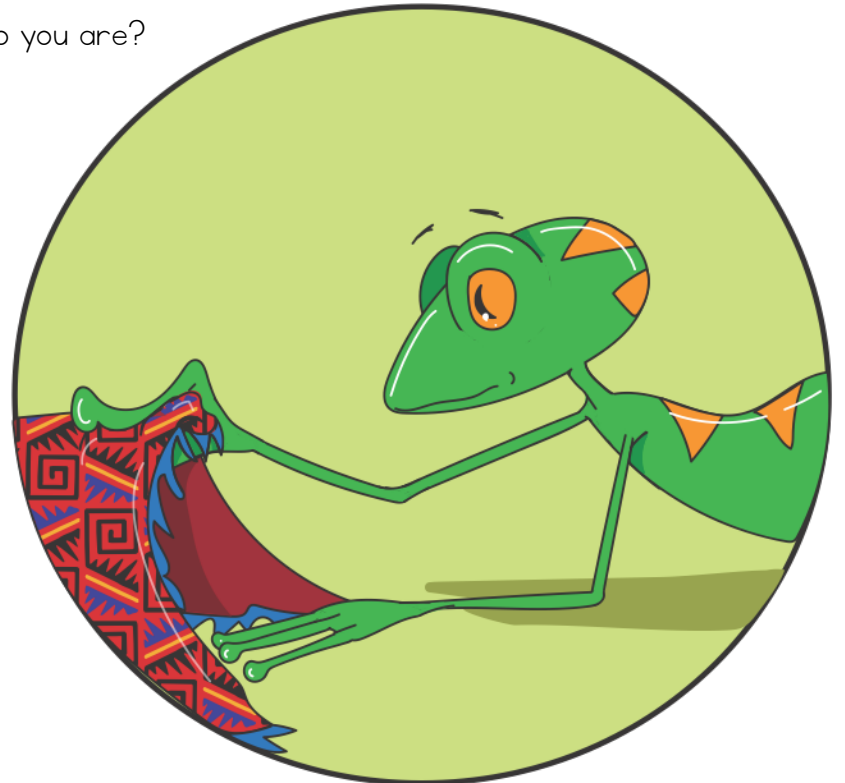
SEEK IT

Seek out alternative perspectives or positions.

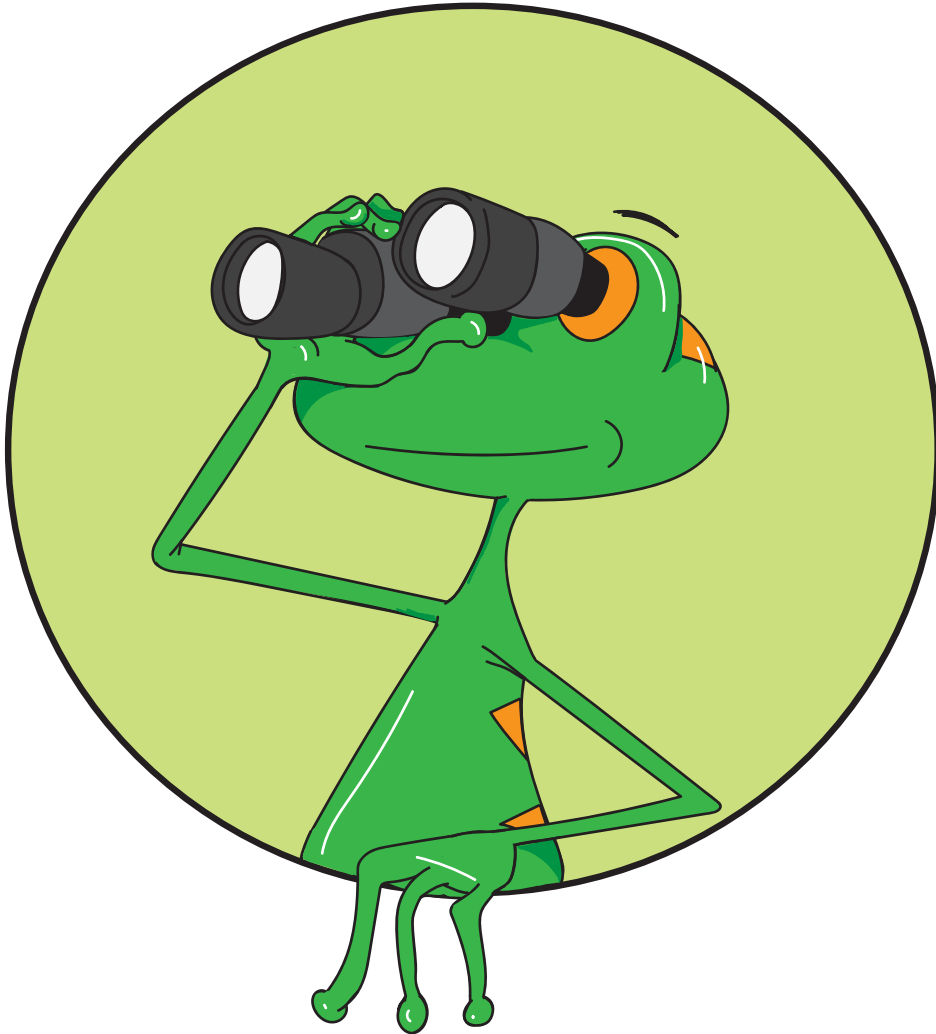
Is there anything in these alternative ideas that has you curious?

Do these alternative ideas help you stay connected to what is important to you? Or do they take you away from them?

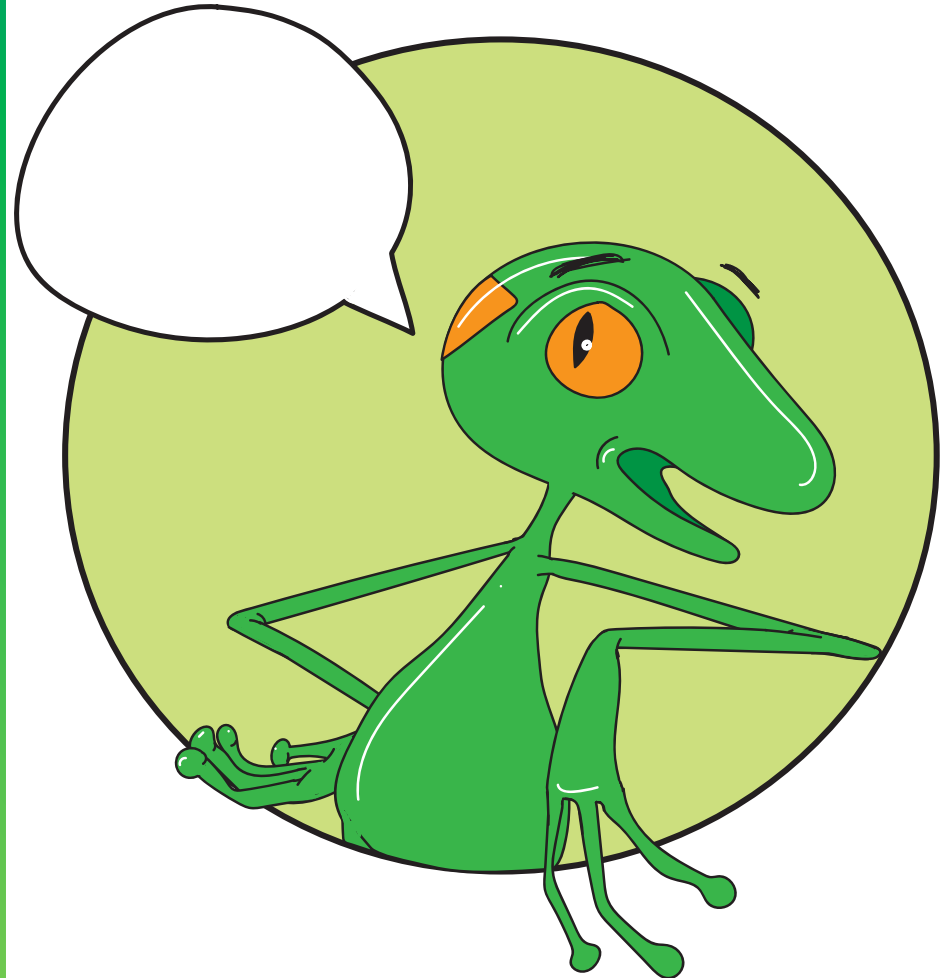
Is there a way to engage with alternative ideas and still stay connected to who you are?



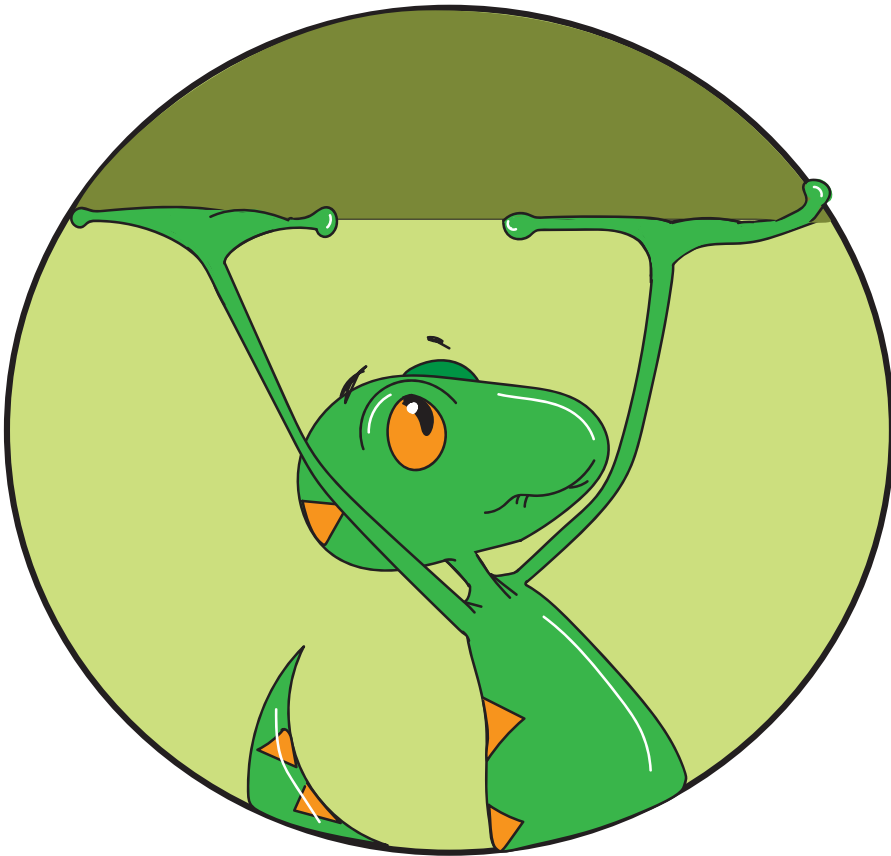
SEE IT



SAY IT



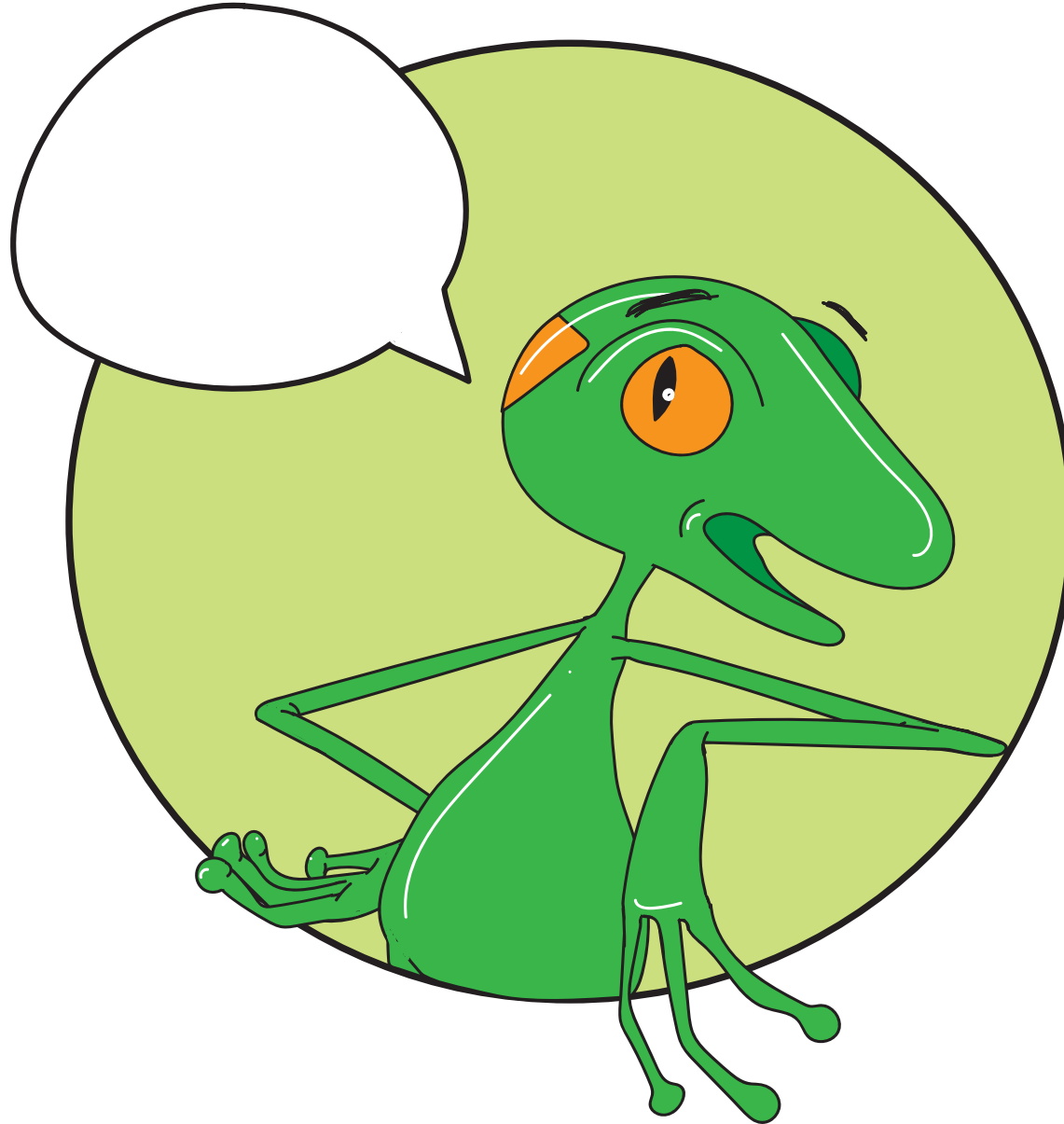
SUPPORT IT



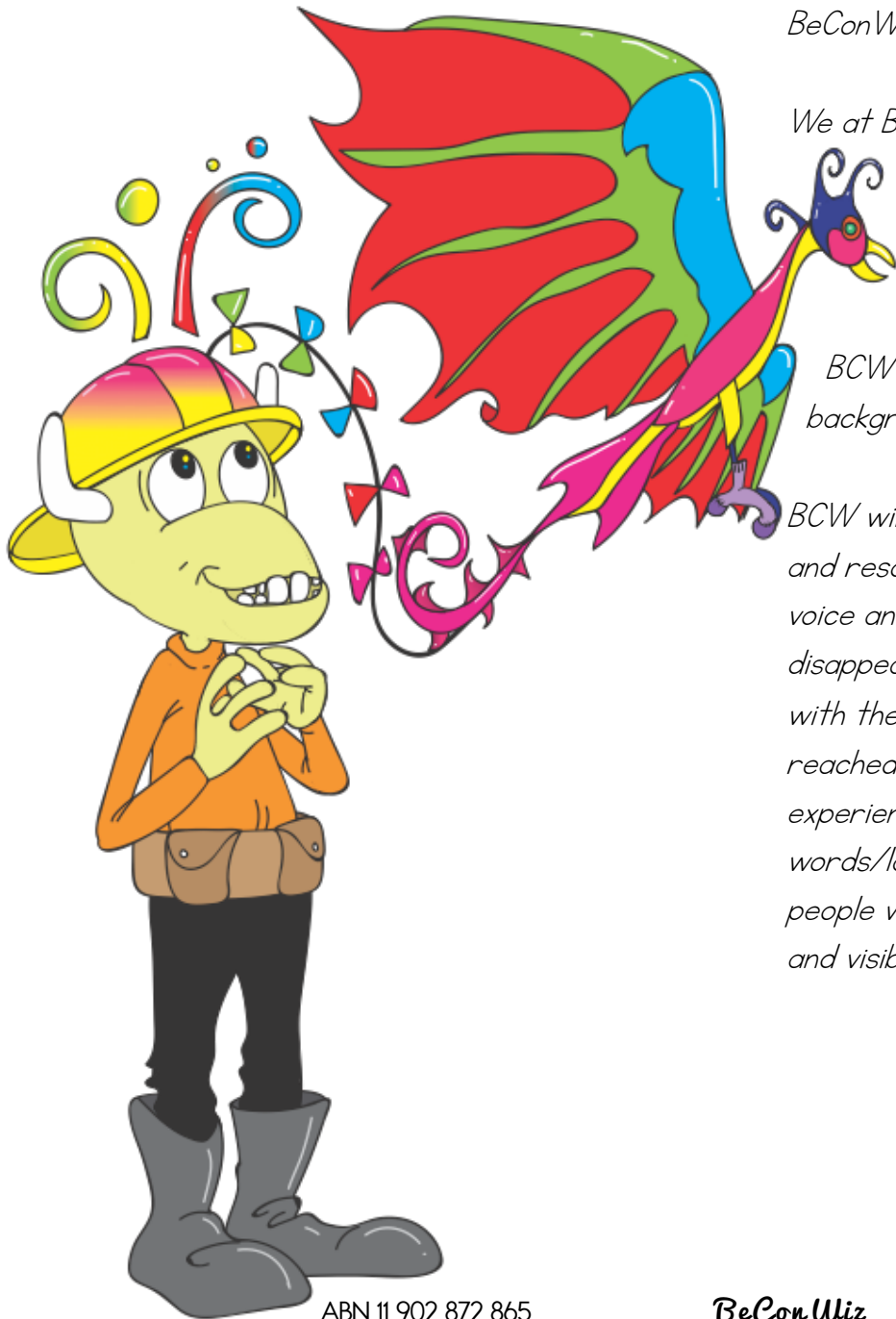
SEEK IT



See Say Seek Support



BeConWiz's commitment to equitable and ethical practices



BeConWiz, will be referred to as BCW in this document.

We at BeConWiz, acknowledge the Traditional Custodians of the lands on which we work and live throughout Australia and recognise their continuing connection to land, waters and culture. We pay our respects to their Elders past, present and emerging.

BCW is committed to creating a safe and welcoming environment that embraces all backgrounds, cultures, sexualities, genders and abilities.'

BCW will now use 'they - themselves' as a singular, gender-neutral pronoun in all material and resources generated. Just as the use of 'he - man' disappeared women's voice and identity, use of the binary 'she - he' and related pronouns has disappeared and rendered voiceless marginalised groups that do not identify with the 'he -she' pronouns. Until some wider grammatical agreement has been reached about what pronouns will be used to embrace the diversity of gender experience, in text we will use 'they - themselves' in our materials. Given that words/language create reality, using language that is acknowledging and inclusive of all people who identify across a wide gender spectrum is an issue of power, politics, respect and visibility. "



TERMS AND CONDITIONS

LICENSE TO USE PURCHASED INDIVIDUAL CLIP ART

The clipart purchased on this site may only be used for personal or class use. It can not be used in the production or publication of any materials, resources or other related goods that are to be sold onto others or for commercial use. Schools wishing to buy clip art for across school use or in school publications must contact the BeConWiz team for a price for this option.

LICENSE TO USE PRODUCTS

Any products purchased from BeConWiz are purchased by you for your personal use and not for distribution or resale. BeConWiz download resources are able to be printed for personal use by the purchaser (a given single educator) only. They can be used to teach your class of students and are intended to be used in this way. *Schools wishing to use product packages or negotiate tailored deals or teaching teams must contact BeConWiz directly and negotiate separate terms and conditions.*

Any workshop or consultancy work will be negotiated and tailored to meet individual client needs and as such, the terms and conditions of such purchases or contracts will be issued and delivered in separate documentation.

ELECTRONIC DOWNLOAD DELIVERY

Download products are immediately available to holders of a product package of BeConWiz. If you have any problems with an immediate download, please contact us at beconwiz@beconwiz.com

DOWNLOAD PRODUCTS AND MATERIALS

We provide no guarantee that you will be able to use school computers to download BeConWiz materials. We will endeavor to do our best to ensure downloadable material is accessible on a variety of computers, tablets or devices. If you are experiencing issues with download or printing of materials please contact us, so we can improve our service to you.

